



## Water dish filler



andy25lion

[VIEW IN BROWSER](#)

updated 8. 10. 2022 | published 8. 10. 2022

### Summary

This device can be used to fill a water dish to a specific level that is adjustable. The advantage of this design is...

[Household](#) > [Pets](#)

Tags: [adjustable](#) [cat](#) [closeable](#) [dish](#) [dog](#) [filler](#)  
[modular](#) [pet](#) [pets](#) [universal](#) [water](#)

This device can be used to fill a water dish to a specific level that is adjustable. The advantage of this design is that it can be closed during installation and removal so that you don't spill water everywhere. It can also be used with any existing water dish that is big enough.

Adapters are included for standard water bottles and milk jugs but there's also an f3d file with the entire design and adapters so you can create your own adapter. The thread used in the base part is an ISO TR28x3 with rounded edges.

A couple of optional legs are also included that can be attached to the base with M5 screws. The screw holes are 8mm apart.

### Usage

- Screw the adapter on to a bottle, make sure it's sealed tight

- Fill the bottle with water
- Screw the bottle with the adapter into the base until it's closed
- Place the entire assembly into a water dish and unscrew the bottle with the adapter until the desired water level is reached

## Things to look out for

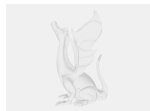
- The adapter needs to be sealed to the bottle, if air gets in between them the device won't stop filling the dish with water. Consider using silicone or glue if just screwing in is not enough
- Use a rigid bottle if possible, some flexible PET bottles will bow inwards due to the lower pressure
- When the adapter is fully screwed into the base it will leak a bit but it only has to hold water until it's installed

Category: Pets

## Model files



**stand2.stl**



**bottle-thread\_v47.f3d**



**stand1.stl**



**adapter2.stl**



**adapter.stl**



**base.stl**

[Find source .stl files on Thingiverse.com](#)

## License ©

This work is licensed under a  
**Creative Commons (4.0 International License)**



**Attribution-NonCommercial**

---

- ✗ | Sharing without ATTRIBUTION
- ✓ | Remix Culture allowed
- ✗ | Commercial Use
- ✗ | Free Cultural Works
- ✗ | Meets Open Definition