

Prusa i3 MK3/S/+ Upgrade Parts



MongooseTNM

[VIEW IN BROWSER](#)

updated 7. 12. 2023 | published 7. 12. 2023

Summary

A Collection of Prusa MK3/S/+ Parts that are better than the stock ones (IMHO).

[3D Printers](#) > [Prusa Parts & Upgrades](#)

Tags: [upgrade](#) [prusa](#) [prusai3](#) [mk3](#) [originalprusai3mk3](#) [prusamk3](#) [mk3s](#) [prusai3mk3](#) [prusamk3s](#) [prusai3mk3s](#) [prusai3mk3smmu2s](#) [prusai3mk3mmu2](#) [beefy](#) [strong](#) [mk3splus](#) [stiff](#)

These parts are meant to allow you to print faster with higher accelerations reliably. They stiffen parts of the printer that I found to be less stiff than I wanted.

[Link to MK3S+ Assembly Guide \(Should be the same for MK3S and MK3\)](#)

DISCLAIMER: I can't recommend supporting the lead screw with a bearing if your lead screw wobbles when the z-axis goes up and down. If it wobbles do not do the z-axis top mod. My lead screws do not wobble and I have found that this improved rigidity and print quality quite noticeably. Thanks to [@Robert_256299](#) for reminding me about this issue.

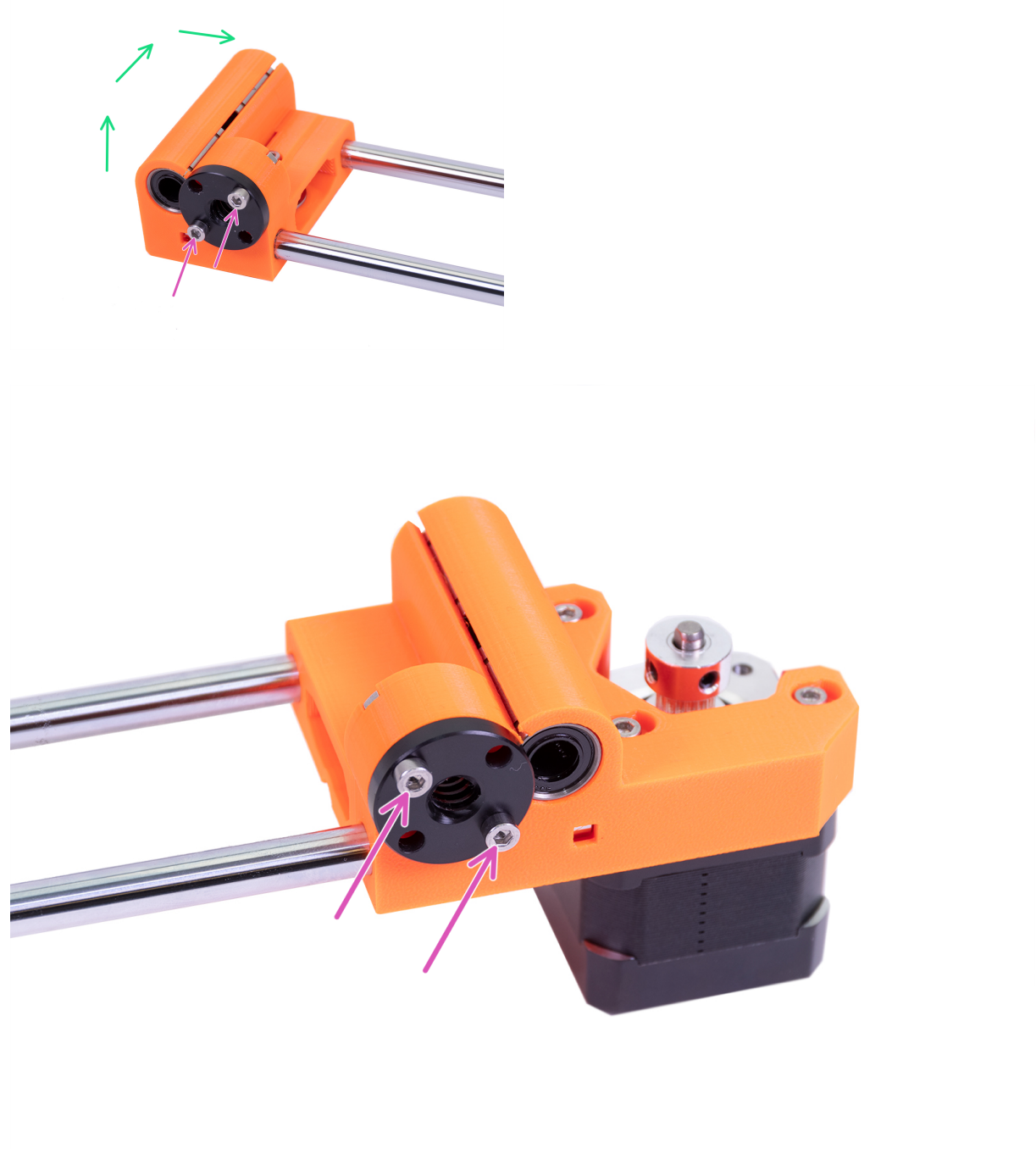
Z Axis Top:

This part adds a bearing to support the lead screw. This part is also the only upgrade that needs extra parts.

Parts Needed:

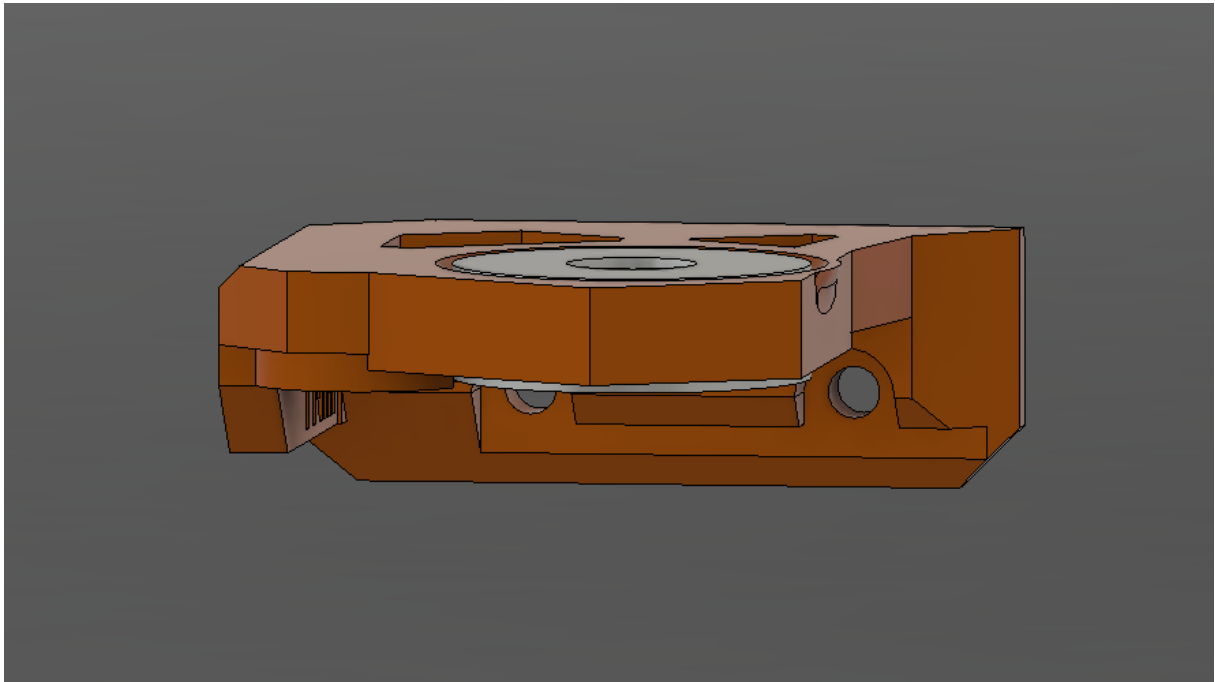
- 2x 608 Bearing
- 4x M3x18 Button Head

Replace bolts pointed out in pink with button-head versions so the bolt heads don't collide with the bearings.



Make sure to insert the bearing so it is flush with the top surface.

Example:



Mount like the original

Z Axis Bottom:

Mount it exactly like the original. Since there are no R/L markings on the parts just make sure the smooth rod holes are on the outside.

Y Motor Holder:

Mount it exactly like the original.

Y Belt Idler:

Mount it exactly like the original.

This remix is based on



i3 MK3S+ printable parts

by Prusa Research



i3 MK3 Printable parts

by Prusa Research



i3 MK3S Printable parts

by Prusa Research

Model files



STLs

4 files



y-belt-idler_beefy_tnm.3mf



z-axis-bottom_beefy_tnm.3mf



z-axis-top_better_tnm.3mf



y-motor-holder_beefy-stiffer_tnm.3mf



STEPs

4 files



y-belt-idler_beefy_tnm.step



z-axis-bottom_beefy_tnm.step



z-axis-top_better_tnm.step



y-motor-holder_beefy-stiffer_tnm.step

License

This work is licensed under a
GNU



General Public License v2.0

-
- ✗ | Sharing without ATTRIBUTION
 - ✓ | Remix Culture allowed
 - ✓ | Commercial Use
 - ✓ | Meets Open Definition
 - i | Share under the same license