



## Anycubic Kossel Linear Plus Effector

 Johetan

[VIEW IN BROWSER](#)

updated 9. 10. 2022 | published 9. 10. 2022

### Summary

For printing with fairly high temperatures, I needed more airflow. This is an effector using only 40mm fans.

[3D Printers](#) > [3D Printers - Upgrades](#)

Tags: [deltaeffector](#) [deltaprinter](#) [effector](#)

For printing with fairly high temperatures, I needed more airflow. This is an effector using only 40mm fans.

You'll need brass inserts, I used 4,5mm od M3 inserts and 3mm od M2 inserts.

Might need a bit work with a multitool for a good fit on the Hotend.

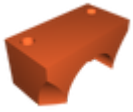
There is no bed leveling attached, as I use underbed Piezos.

Support only on the big Overhangs, full infill.

I printed at 0,2mm Resolution with a 0,4mm Nozzle. Full Infill.

It comes with a bit of a height loss, but the better cooling makes up for it.

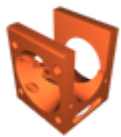
# Model files



**fdm\_clamp.stl**



**fdm\_fan.stl**



**fdm\_body.stl**

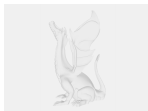


**fdm\_plate.stl**

📄 Remix: <https://www.thingiverse.com/thing:3230635>



**fdm\_clamp.sldprt**



**fdm\_plate.sldprt**



**fdm\_body.sldprt**

## License ©

This work is licensed under a  
**Creative Commons (International License)**

**Public Domain**



✓ | Sharing without ATTRIBUTION

- ✓ | Remix Culture allowed
- ✓ | Commercial Use
- ✓ | Free Cultural Works
- ✓ | Meets Open Definition