



Dremel Brush Handle

M Moen

[VIEW IN BROWSER](#)

updated 9. 10. 2022 | published 9. 10. 2022

Summary

Holds 3mm dremel tools, for cleaning nozzle.

[3D Printers](#) > [Accessories](#)

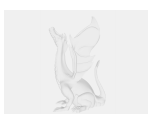
I was looking for a way to hold the brass brush from the dremel kit i had, and designed this handle that fits 3mm dremel tools. i find the brass brush nice to use one the nozzle.

Requires 2pcs M3x10

Model files



dremel-brush-handle-v1.stl



dremel-brush-handle-v1.step

License ©

This work is licensed under a
Creative Commons (4.0 International License)



Attribution

- ✗ | Sharing without ATTRIBUTION
- ✓ | Remix Culture allowed
- ✓ | Commercial Use
- ✓ | Free Cultural Works
- ✓ | Meets Open Definition