

Flexy Washington Monument



DesignMakeTeach

VIEW IN BROWSER

updated 9. 10. 2022 | published 9. 10. 2022

Summary

Fun flexible Washington Monument. v2 Flexy Washington Monument Thin uploaded with improved proportions. Stands upright...

[World & Scans](#) > [Architecture & Urbanism](#)

Tags: [flexible](#) [flexy](#) [monument](#) [washington](#)
[washingtonmonument](#)

Fun flexible Washington Monument.

v2 Flexy Washington Monument Thin uploaded with improved proportions.

Stands upright and looks better from multiple angles.

Learn how I designed this thing on my blog <https://designmaketeach.com/2017/01/15/3d-model-flexy-washington-monument/>.

Discover much more at <http://DesignMakeTeach.com>

Feel free to leave a comment or contact me on Twitter @DesignMakeTeach.

Print Settings

Printer Brand:

Ultimaker

Printer:

Ultimaker 2

Rafts:

No

Supports:

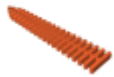
No

Notes:

Printed with PLA.

Category: Buildings & Structures

Model files

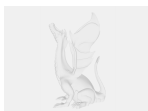


flexy_washington_monument.stl



v2_flexy_washington_monument_thin.stl

Other files



sources.txt

[Find source .stl files on Thingiverse.com](https://www.thingiverse.com)

License ©

This work is licensed under a
Creative Commons (4.0 International License)



Attribution

- ✗ | Sharing without ATTRIBUTION
- ✓ | Remix Culture allowed
- ✓ | Commercial Use
- ✓ | Free Cultural Works
- ✓ | Meets Open Definition