



Ramen Tower 1



DesignMakeTeach

[VIEW IN BROWSER](#)

updated 9. 10. 2022 | published 9. 10. 2022

Summary

Ramen Tower 1 remixes a scan of a pack of dried ramen noodles by artist Tom Burtonwood. A scan of a common food item...

[Art & Design](#) > [Other Art & Designs](#)

Tags: [oafny](#) [oafny2016](#)

Ramen Tower 1 remixes a scan of a pack of dried ramen noodles by artist Tom Burtonwood. A scan of a common food item is stretched and distorted to form a complex and organic structure hovering over the surrounding landscape. Reminiscent of a large termite tower, the form suggests a modern green building design. Or, perhaps the structure is a windowless building whose carefully shaped surfaces ensure electronic privacy, preventing eavesdropping on the inhabitants of a security organization. The base of Ramen Tower 1 is a simple rectangular solid to ease the transition for those approaching the alien structure. Maintaining the proportions of a traditional structure, large scale 3D printing allows the outer skin of the tower to take on strange new shapes.

This work has been accepted for display at the Outsider Art Fair NYC, (Jan 21-24 2016) in the Curated Space: Babel. <http://www.outsiderartfair.com/fair/1651/program>

Category: Art

Model files

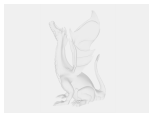


babel_josh_ajima_ramen_tower_1_a.stl

Other files



sources.txt



babel_josh_ajima_ramen_tower_1_a.pdf

[Find source .stl files on Thingiverse.com](#)

License ©

This work is licensed under a
Creative Commons (4.0 International License)



Attribution

-
- ✗ | Sharing without ATTRIBUTION
 - ✓ | Remix Culture allowed
 - ✓ | Commercial Use
 - ✓ | Free Cultural Works
 - ✓ | Meets Open Definition