

Universal Spool Centerer Bearingless - now with pressfit magnets



Kinematic Digit

[VIEW IN BROWSER](#)

updated 3. 9. 2023 | published 3. 9. 2023

Summary

Spool holder centers and mounts on both Dual filament holder & Creality Stock holder.s Reduces drag on the filament.

[3D Printers](#) > [3D Printers - Upgrades](#)

Tags: [spool](#) [filament](#) [filamentspoolholder](#) [filamentspoolroller](#)
[spooler](#) [bearingless](#)

NEW VERSION (Now with optional 6x3 press-fit magnets so it doesn't fall off the spooler when loading, and an extended version for spools that are a little wider)

I redesigned this specifically for the dual filament holder that I made from the link, which I love:

<https://www.printables.com/model/247964-dual>

I wanted to reduce some drag from the different center spool sizes and used this universal spool holder <https://www.thingiverse.com/thing:5543310> to adapt to my dual filament holder. It also works perfectly for the stock Ender 3 V2 spool holder and the CR10s. It might fit other Creality spool holders.

Two versions now, with the standard stock ender holder can handle spool holes as large as 75 mm in diameter and as small as 46mm. Maximum width of spool is 65mm when the spool hole is 46mm, but can be wider (up to 80mm) depending on the spool hole size. The extended version allows you to use much wider spools, but does require you to replace the stock center spool holder.

The spool is split down the middle so it can be mounted easily on spool holders that you can't slide anything on. You now have the option to add 6x3 magnets (just press fit and add a dab of glue if too loose). Mate the two parts together, add your spool, and then the locking centering nut. Your spool should spin freely without any need for any bearings.

I printed this with **Matter3D** PETG filament @ .32mm with supports for the bottom (touching the build plate)

This remix is based on



Universal Spulenadapter 2-teilig

by Calliano

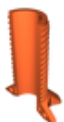
Model files



spool_nut.stl



spool_centerer_male.stl



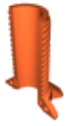
spool_centerer_female.stl

☐ Extended version for larger spoolers (requires new axial part)



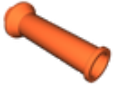
spool_centerer_male_extended.stl

☐ Extended version for larger spoolers (requires new axial part)



spool_centerer_female_extended.stl

☐ New version with pressfit magnets



extended_round_spool_holder.stl

☐ The extender for the standard Ender Holder

License ©



This work is licensed under a
[Creative Commons \(International License\)](#)

Public Domain

- ✓ | Sharing without ATTRIBUTION
- ✓ | Remix Culture allowed
- ✓ | Commercial Use
- ✓ | Free Cultural Works
- ✓ | Meets Open Definition