



Filament marker for PTFE tubes

 Lars Kollin

[VIEW IN BROWSER](#)

updated 10. 10. 2022 | published 10. 10. 2022

Summary

Mark the tubes of you MMU to remember which filament is loaded in which channel

[3D Printers](#) > [Accessories](#)

Tags: [marker](#) [mmu](#)

Yes, I know, one can see what color of Filament is loaded in which ptf tube. But sometimes it is hard to differ between red and magenta, or I just dont remember if I loaded the black PETG or the black PLA on the masterspool I was too lazy to mark correctly then.

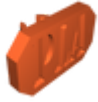
So first thing I do now when I load new filament is to print this little marker (approx. 6 mins.) with it, and clip it on the ptf tube.

Blenderfile is included so you can mark your super exotic coconut infused pina colada filament too ^^.

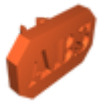
Model files



filament_marker_blank.stl



filament_marker_pla.stl



filament_marker_abs.stl



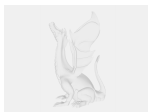
filament_marker_tpu.stl



filament_marker_petg.stl



filament_marker_hips.stl



filament_marker.blend

License ©

This work is licensed under a
[Creative Commons \(International License\)](#)

Public Domain



- ✓ | Sharing without ATTRIBUTION
- ✓ | Remix Culture allowed
- ✓ | Commercial Use
- ✓ | Free Cultural Works
- ✓ | Meets Open Definition