



Mame-FS1 Fan Shroud: Elegoo Neptune 2s

 MochaMame

[VIEW IN BROWSER](#)

updated 12. 10. 2022 | published 12. 10. 2022

Summary

It's an improvement over the stock Elegoo Neptune 2s, cooler, quieter, lighter, and part cooling is at least as good.

[3D Printers](#) > [3D Printers - Upgrades](#)

Tags: [4010fan](#) [elegoo](#) [elegooneptune2s](#) [fanshroud](#)
[hotendcooling](#) [partcooler](#) [partcooling](#)

It's an improvement over the stock Elegoo Neptune 2s, cooler, quieter, lighter, and part cooling is at least as good. So if you haven't printed an upgrade yet this one might be fun to try. Something like a Satsana would do the parts cooling better.

I used the stock 4010 fan and a 12v 2510. The 2510 fan i got can cool the heatsink about 10 degrees cooler than stock in this design and at the same time it's super quiet.

The silence is the best point. With this shroud and fan choice the extruder is the only thing making noise during the initial layers. The stock 4010 blower in this configuration is quiet unless you have bad bearings.

I printed in PLA+ and don't have issues but PETG would be better, just make sure the silicone sock is on and fans are running.

Cura Settings:

0.2mm Layer Height

0.39mm Line Width

2 Walls

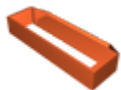
Top/Bottom Thickness 1mm

No Infill

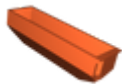
Support Overhang Angle at 87 so that only the cable management slot get support. If you need more then add as you like.

The video has heat tests, noise tests, weight tests and assembly:

Model files



cooling_shield.stl



cooling_tip.stl



fan_shroud.stl

License ©

This work is licensed under a
[Creative Commons \(4.0 International License\)](https://creativecommons.org/licenses/by-nc-sa/4.0/)



Attribution—Noncommercial—Share Alike

- ✗ | Sharing without ATTRIBUTION
- ✓ | Remix Culture allowed
- ✗ | Commercial Use
- ✗ | Free Cultural Works
- ✗ | Meets Open Definition