



Aeon's End Nemesis stand



The Mawb

[VIEW IN BROWSER](#)

updated 24. 6. 2024 | published 24. 6. 2024

Summary

Aeon's End Nemesis stand by leeechu86 - <https://www.thingiverse.com/thing:4739070> Remix included as well.



13.98 hrs



3 pcs



0.20 mm



0.40 mm



PLA



170 g



Prusa MINI /
MINI+

[Toys & Games](#) > [Board Games](#)

Aeon's End Nemesis stand by leeechu86 - <https://www.thingiverse.com/thing:4739070>

This is a for the game **Aeon's End** to hold the nemesis deck and boss card that you choose to face.

I am including the original files and the gcode that I used. I cut off the flat part because of my bed size and I didn't think it was necessary.

This remix is based on



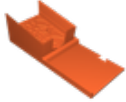
Aeon's End Nemesis stand

by leeechu86

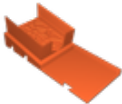
Model files



nemesis_stand_center_corrected.stl

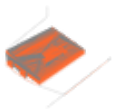


nemesis_stand_left.stl



nemesis_stand_right.stl

Print files



nemesis_stand_center_corrected_02mm_pla_mini_4h19m.gcode

🌀 PLA 🌀 0.40 mm ≡ 0.20 mm ⌚ 4.32 hrs ⚖️ 58 g 🖨️ Prusa MINI / MINI+



nemesis_stand_left_02mm_pla_mini_4h50m.gcode

🌀 PLA 🌀 0.40 mm ≡ 0.20 mm ⌚ 4.83 hrs ⚖️ 56 g 🖨️ Prusa MINI / MINI+



nemesis_stand_right_02mm_pla_mini_4h50m.gcode

🌀 PLA 🌀 0.40 mm ≡ 0.20 mm ⌚ 4.83 hrs ⚖️ 56 g 🖨️ Prusa MINI / MINI+

License

This work is licensed under a
GNU



General Public License v2.0

- ✗ | Sharing without ATTRIBUTION
- ✓ | Remix Culture allowed
- ✓ | Commercial Use
- ✓ | Meets Open Definition
- i | Share under the same license