

Keen-One Counterweight adapter



Gyoenastaader

[VIEW IN BROWSER](#)

updated 12. 10. 2022 | published 12. 10. 2022

Summary

An adapter that you can bolt onto the existing accessory mount on your declination motor



1.28 hrs



1 pcs



0.30 mm



0.40 mm



PET



24 g



Prusa
MK3/S/S+

[Learning](#) > [Physics & Astronomy](#)

Tags: [astrophotography](#) [telescope](#)

This is an adapter to hold a M12 Hex Extension Coupling Nut. The nut goes inside the adapter, and then the adapter bolts directly onto the declination axis. This should fit most common M12 counter weight bars, allowing the KEEN-ONE to handle larger payloads. I've tested this up to 17 lbs. An extension nut was used to provide more surface area for the counterweight to press against. You could try using a regular M12 hex nut.

Items Needed:

1 x M12 Extension Coupling Nut

4 x M4 x 20 screws

This remix is based on



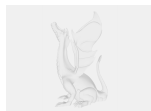
Keen-One Harmonic Drive EQ Mount

by MrDeepAddicted

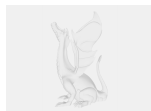
Model files



counterweight-v6.stl



counterweight-v5.step









counterweightadapter.f3z

Print files



counterweightadapter_03mm_petg_mk3s_1h17m.gcode

 PET  0.40 mm  0.30 mm  1.28 hrs  24 g  Prusa MK3/S/S+

License

This work is licensed under a
[Creative Commons \(4.0 International License\)](https://creativecommons.org/licenses/by-nc-sa/4.0/)



Attribution—Noncommercial—Share Alike

- ✗ | Sharing without ATTRIBUTION
- ✓ | Remix Culture allowed
- ✗ | Commercial Use
- ✗ | Free Cultural Works
- ✗ | Meets Open Definition