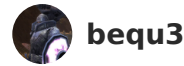




DÖLJROLL - Castors for LACK tables



bequ3

[VIEW IN BROWSER](#)

updated 10. 3. 2023 | published 10. 3. 2023

Summary

Simple mounting blocks for hidden castors on IKEA LACK side tables

[Hobby & Makers](#) > [Other Ideas](#)

Tags: [ikea](#) [ikealack](#) [lack](#)

This is a simple modification to get your IKEA Lack table on casters while keeping the overall aesthetics. The key to this design is finding the proper hardware. The wheels must be small enough to swivel around within a 22.5 mm radius. I got mine from my local hardware store Hornbach ([Tarrox Caster 20x30x20 mm, 6 mm stem type mounting](#)). If you can't get those, I uploaded the Fusion 360 file for you to apply your casters' dimensions.

Installation Instructions

1. The bottom plates on the IKEA Lack table legs are just lightly glued in. Use a hammer to break the bond, pliers, and a scraper to clean up the remaining wood chips.
2. Check the mounting block dimensions with the table legs!
3. Press-fit the casters into the mounting blocks. (I used a pin punch and a hammer to drive it into its resting position)
4. Do a dry run on the mounting block installation to check the casters' planned depth and corresponding stick-out.

5. Mark the rough area where the mounting blocks rest inside the table leg
6. Put on gloves! Then, mix and apply **2K epoxy** to the outside of the blocks and the wood surface.
7. Press the caster base into the table leg and use two depth guides to ensure depth and squareness.

Customization

When fitting other casters to this design, consider that they will sack a bit when loaded. That will increase their swivel radius. Ensure that the outermost part is less than 22.5 mm from the centre.

Update the dimensions of the installation depth stop according to your mounting height. I suggest 5mm ground clearance to be on the safe side.

Print Instructions

This model printed best with a 0.8 mm nozzle at 0.5 mm layer height. More layer height means more roughness for the glue to grab on. But a 0.4 mm nozzle at 0.3 mm layer height will work just as fine.

Bill Of Materials

4x	Tarrox Caster 20 x 30 x 20 mm; 6 mm stem type mounting
4x	mounting-block.stl
2x	installation-depth-stop.stl

Model files



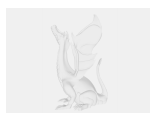
mounting-block.stl

4x



installation-depth-stop.stl

2x



lack-caster-block.f3d

License

This work is licensed under a
Creative Commons (4.0 International License)



Attribution-ShareAlike

- ✗ | Sharing without ATTRIBUTION
- ✓ | Remix Culture allowed
- ✓ | Commercial Use
- ✓ | Free Cultural Works
- ✓ | Meets Open Definition