



Eufy Camera Mount for Prusa Mini



ChmNrd

[VIEW IN BROWSER](#)

updated 10. 10. 2022 | published 10. 10. 2022

Summary

Eufy Camera Mount for Prusa Mini

[3D Printers](#) > [3D Printers - Upgrades](#)

Tags: [camera](#) [cameramount](#) [eufy](#) [eufy2k](#) [eufymount](#)
[prusamini](#)

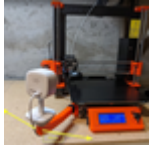
This is a remix of [M2's Eufy Camera Mount](#) to fit the Mini/Mini+. It includes a base that perfectly fits the Eufy Security Solo IndoorCam C24, 2K indoor camera. I've recently switched to these cameras from Wyze for my printers since they support RTSP natively.

The mount and arm were modified to provide clearance for the Prusa Mini's bed. The mounting base is the same as the original.

The base prints fine without supports.

Supports were used for both the arm and mount.

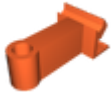
This remix is based on



Eufy Camera Mount For Prusa

by M2

Model files



eufy-camera-prusa-mini-mount.stl



eufy-camera-prusa-mini-short-arm.stl



eufy-indoor-camera-base.stl

License ©

This work is licensed under a
[Creative Commons \(4.0 International License\)](#)



Attribution-ShareAlike

- ✗ | Sharing without ATTRIBUTION
- ✓ | Remix Culture allowed
- ✓ | Commercial Use
- ✓ | Free Cultural Works
- ✓ | Meets Open Definition