

The 3D printable Knee Arthrometer



edmar

[VIEW IN BROWSER](#)

updated 16. 12. 2023 | published 16. 12. 2023

Summary

The 3D printable Knee Arthrometer - a substitute for Rolimeter Aircast® and KT-1000®.

[Healthcare](#) > [Medical Tools](#)

Tags: [knee](#) [arthrometer](#) [acl](#) [kt1000](#) [ligament](#) [rolimeter](#)
[orthopaedics](#)

The 3D printable Knee Arthrometer

Authors:

- **Edmar Stieven Filho** (ORCID:0000-0003-2869-4019) - Orthopedist and Traumatologist at Hospital de Clinicas, Professor at Federal University of Paraná.
- **Isabela do Prado Nascimento** (ORCID: 0000-0002-3436-9311) - Medical Student at the Federal University of Paraná.
- **Ayrton Andrade Martins Neto** (ORCID:0000-0003-2869-4019) - Orthopedist and Traumatologist at Hospital de Clinicas, Federal University of Paraná.
- **Carolline Popovicz Nunes** (ORCID:0000-0002-9835-0185) - Resident in Orthopedics and Traumatology, Hospital de Clinicas, Universidade Federal do Paraná.

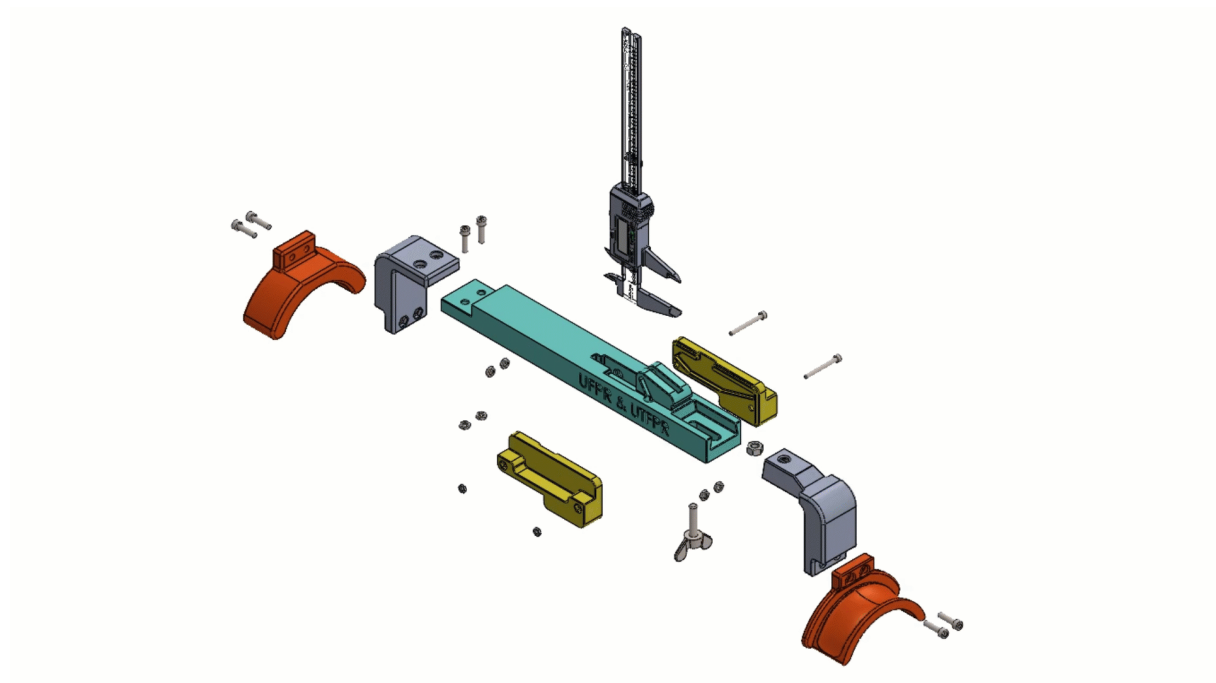
- **José Aguiomar Foggiatto** (ORCID: 0000-0001-5393-3654)- Mechanical Engineer, Professor at the Federal Technological University of Paraná - UTFPR.

Acknowledgments:

- **Yasmin Pontes Becker** (ORCID:0000-0002-1000-430X) - Resident in Pediatrics, Hospital Pequeno Príncipe, Curitiba, Paraná.
- **Rafaela Yukari Sakai** (ORCID: 0000-0002-8127-2256) - Production engineering student, Federal University of Technology Paraná, Curitiba, Paraná.

Build Guide - The 3D printable Knee Arthrometer:

https://ctea.in/3D_build-guide



How to use

Slides tutorial:

How to use: <https://ctea.in/use>

How to use - tips: <https://ctea.in/howusetip>

Model files



all pieces - 3mf

2 files



all-pieces-carbon-fiber-caliper.3mf



all-pieces-metal-caliper.3mf



STL

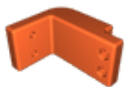
10 files



main-bar-barra-principal.stl



distal-arch-arco-distal.stl



distal-angle-bracket-braco-distal.stl



proximal-arch-arco-proximal.stl



proximal-angle-bracket-braco-proximal.stl

☐ 5mm M6 nut thickness



right-cover-carbon-fiber-caliper-tampa-dir.stl



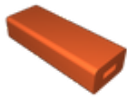
left-cover-carbon-fiber-caliper-tampa-esq.stl



left-cover-metal-caliper-tampa-esq.stl



right-cover-metal-caliper-tampa-dir.stl



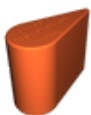
caliper-cap-protecao-do-paquimetro.stl

☐ optional - protection for the depth rod

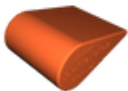


support cushion

2 files



support-cushion.3mf

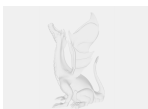


support-cushion.stl



STEP and f3d files

2 files



step-file.step



fusion-360.f3d

Other files



rolimeter-manual.pdf



kt-1000-manual.pdf

License ©

This work is licensed under a
GNU



General Public License v2.0

-
- ✗ | Sharing without ATTRIBUTION
 - ✓ | Remix Culture allowed
 - ✓ | Commercial Use
 - ✓ | Meets Open Definition
 - i | Share under the same license