



Belkin Gray 12 Plug Power Strip Hangers

 **DorffMeister**

[VIEW IN BROWSER](#)

updated 10. 10. 2022 | published 10. 10. 2022

Summary

I wanted to hang a Belkin, Gray, 12 outlet power strip on the back of my entertainment center. The unit has a 4.5mm...

[Household](#) > [Office](#)

Tags: [belkin](#) [belkinpowerstrip](#) [powerstripbracket](#)
[powerstripbrackets](#) [powerstriphanger](#) [powerstripmount](#)

I wanted to hang a Belkin, Gray, 12 outlet power strip on the back of my entertainment center. The unit has a 4.5mm plate running across the back. My design hooks into this plate.

You use the Wide Hanger at the fat end near the power switch. Use the Narrow Hanger on the opposite end, placing it as close to the cable clips as possible so you don't impede plugging in the last output in the middle. To affix the hangers to the power supply, use two 14" Zip Ties on each hanger.

Print Settings

Printer Brand:

Prusa

Printer:

i3 MK3

Rafts:

No

Supports:

No

Resolution:

0.3mm

Infill:

20%

Filament: Hatchbox PLA Black Post-Printing =====

Feed the zip ties through.

Affix to the Belkin.

Hang.

How I Designed This

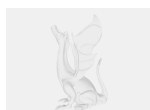
Designed in Fusion 360. Export attached.

Just took a swag at a design and I'm super happy with it.

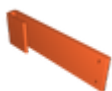
Category: Organization

Model files

narrow_hanger.stl



belkin_gray_12_plug_hangers_v4.f3d



wide_hanger.stl

[Find source .stl files on Thingiverse.com](#)

License ©

This work is licensed under a
Creative Commons (4.0 International License)



Attribution-NonCommercial

-
- ✗ | Sharing without ATTRIBUTION
 - ✓ | Remix Culture allowed
 - ✗ | Commercial Use
 - ✗ | Free Cultural Works
 - ✗ | Meets Open Definition