



chameleon ti tbs m8 gps mount



Deviant FPV

[VIEW IN BROWSER](#)

updated 10. 10. 2022 | published 10. 10. 2022

Summary

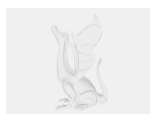
this is a gps holder to suite a TBS m8.2 style gps it attaches to the rear mount of a chameleon ti

[Hobby & Makers](#) > [RC & Robotics](#)

Tags: [armattan](#) [armattanchameleon](#) [caddxvistaantenna](#)
[chameleonti](#) [fpvgpsmount](#) [gps](#) [gpsholder](#) [gpsmount](#) [m8](#)
[tbsgps](#) [vista](#)

this is a GPS holder for a tbs m8.2 made to fit onto the back supports of a chameleon ti. it also has a guide for a vista style antenna at the back.

Model files



chameleon-ti-tbs-gps-m8.stl

License

This work is licensed under a
Creative Commons (4.0 International License)



Attribution-NonCommercial

- ✗ | Sharing without ATTRIBUTION
- ✓ | Remix Culture allowed
- ✗ | Commercial Use
- ✗ | Free Cultural Works
- ✗ | Meets Open Definition