



PWM Spindle Controller Box



MirkoFerronato

[VIEW IN BROWSER](#)

updated 3. 11. 2022 | published 3. 11. 2022

Summary

I designed a PWM box for a spindle controller. Subdivided in some parts to avoid 3d printing support.

[Hobby & Makers](#) > [Electronics](#)

Tags: [controller](#) [motor](#) [power](#) [pwm](#) [pwmcase](#)
[pwmcontroller](#) [spindle](#)

I designed a PWM box for a spindle controller.
Subdivided in some parts to avoid 3dprinting support.

To assemble:

- Main Box
- 45° Gauge Front Plate
- Box Top Lid

The text are quite small in the first plate, I had modify

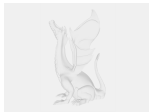
Model files



plancia_controller.stl



spindle_controller_box.stl



spindle_controller_plate.f3d

License ©

This work is licensed under a
[Creative Commons \(4.0 International License\)](#)



Attribution

- ✗ | Sharing without ATTRIBUTION
- ✓ | Remix Culture allowed
- ✓ | Commercial Use
- ✓ | Free Cultural Works
- ✓ | Meets Open Definition