

## A Moderately Overengineered Olpe Vase



Nat (a Cyborg)

[VIEW IN BROWSER](#)

updated 29. 5. 2023 | published 29. 5. 2023

### Summary

Like my slightly overengineered one, but I spent more time on it.



13.55 hrs



1 pcs



0.20 mm



0.40 mm



PLA



122 g



Prusa  
MK3/S/S+

[Household](#) > [Home Decor](#)

Please consider supporting my hobby. You will make my day!

### Interested in selling prints of this model?

Join my [Exclusive Print Seller Tier on Patreon](#) for the rights to **list and sell prints of this model**. Please note that if you are not a member of this tier, printing is intended for personal use only. I appreciate your support!

### About this model

Like my other [vase](#) but better, I think.

I spent more time cleaning up my constraints and elements on this one. I also adjusted the design a bit. Let me know if you like it more.

I included the F3D model for you all to check out! Because you asked.

---

The secret number is 11

## This remix is based on



**A \*slightly\* Overengineered Olpe Vase (print in vase mode!)**

by Nat (a Cyborg)

## Model files



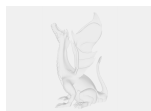
**vase-v2.stl**

[📄 the model](#)



**vase-v2.f3d**

[📄 the source!](#)



**vase-v2.step**

[📄 the STEP](#)



**vase-v2.3mf**

[📄 The project](#)

## Print files



**vase-v2\_02mm\_pla\_mk3s\_13h33m.gcode**

🌀 PLA 🌀 0.40 mm 📏 0.20 mm ⌚ 13.55 hrs ⚖️ 122 g 🖨️ Prusa MK3/S/S+

# License

This work is licensed under a  
**Creative Commons (4.0 International License)**



**Attribution—Noncommercial—Share Alike**

---

- ✗ | Sharing without ATTRIBUTION
- ✓ | Remix Culture allowed
- ✗ | Commercial Use
- ✗ | Free Cultural Works
- ✗ | Meets Open Definition