

Pegboard Flush Cutter Holder for Prusa Bear Frame

odingalt

[VIEW IN BROWSER](#)

updated 11. 10. 2022 | published 11. 10. 2022

Summary

Remix of "Pegboard Flush Cutter Holder", with twist-in nut added to mount on a 2020 / 2040 Bear Frame extrusion.



0.43 hrs



1 pcs



0.30 mm



0.40 mm



PET



5 g



Prusa
MK3/S/S+

[3D Printers](#) > [Accessories](#)

Tags: [bear](#) [bearframe](#) [chp](#) [flushcutter](#) [holder](#)

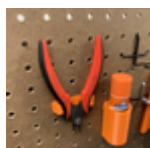
Printed in PETG, 0.3mm layer height, 100% infill, and full supports (unfortunately, sorry! Need a future remix to redesign to be able to print without supports)

CHP makes my favorite wire cutters. I use these for everything - cutting and unloading filament, lifting prints off of my bedsheets, grabbing the small amounts of filament that need cleaned off the sheets, etc. They are a very versatile tool, and the metal on the snips is really good quality in my opinion, they hold up well with regular use.

The problem is, I am always misplacing them on my workbench! Now I can clip them on the side of my Bear Frame Prusa MK3S and keep them handy for unloading filament and removing prints.

[Done is Mesh Mixer, original .mix file is included. I don't need attribution – but I set to “no attribution” so the attribution needs to go back to the parent mix.]

This remix is based on



Pegboard Flush Cutter Holder

by kwfredeen

Model files



wirecutter-holder-for-bear-frame-2020-2040-v1.stl

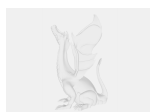
Print files



wirecutter-holder-for-bear-frame-2020-2040-v1_03mm_... .gcode

PET 0.40 mm 0.30 mm 0.43 hrs 5 g Prusa MK3/S/S+

Other files



wirecutter-holder-for-bear-frame-2020-2040-v1.zip

License ©

This work is licensed under a
Creative Commons (4.0 International License)



Attribution

- ✗ | Sharing without ATTRIBUTION
- ✓ | Remix Culture allowed
- ✓ | Commercial Use
- ✓ | Free Cultural Works
- ✓ | Meets Open Definition