



Prusa BEAR MK2.5/ MK3 Meanwell LRS-350/RS-25 PSU enclosure



nimus

[VIEW IN BROWSER](#)

updated 10. 10. 2023 | published 10. 10. 2023

Summary

Meanwell LRS-350 enclosure for bear 2.1 frame with additional RS-25 power block

[3D Printers](#) > [Prusa Parts & Upgrades](#)

Tags: [meanwell](#) [meanwellrs350](#) [prusabear](#) [prusabearupgrade](#)
[prusabearmk3s](#) [prusabearmk25](#) [meanwellrs25](#)

Meanwell LRS-350 enclosure for bear 2.1 frame with additional RS-25 power block. This parts can be usefull if you want to power your Raspberry or led strip lights with different voltage than the main LRS block has.

- **BEAR-PSU-MeanWell-LRS350-RS25-Cover** - same cover for both MK2.5 and MK3 versions
- **BEAR-MK3-PSU-MeanWell-LRS350-RS25-Body** - PSU enclosure for MK3 with power panic unit
- **BEAR-MK25-PSU-MeanWell-LRS-350-RS25-Body** - PSU enclosure for MK2/MK2.5 without using power panic unit
- **BEAR-PSU-MeanWell-LRS-350-upper-mount-non-v-slot** - my version of a upper mount for MeanWell LRS-350 for non v-slot aluminium extrusions

Fasteners:

- M3x8 FHCS - 2pcs for MeanWell RS-25
- M4x8 FHCS - 1pcs, M4x12 FHCS - 2pcs for MeanWell LRS-350
- M3x6 FHCS - 5pcs for cover
- heat set inserts M3x5x4 - 5pcs for body

All parts available both in stl and step.

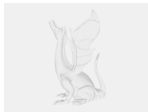
I printed my enclosure and cover on Original Prusa texture PEI sheet with black Bestfilament PETG.

UPD 10.10.2023 rev2: Fix the body heat set inserts holes dimentions.
Now the holes diameter 4.7mm instead of 4.6mm

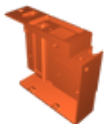
Model files



bear-psu-meanwell-lrs350-rs25-cover.stl



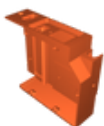
bear-psu-meanwell-lrs350-rs25-cover.step



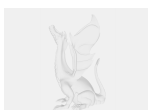
bear-mk3-psu-meanwell-lrs350-rs25-body-rev2.stl



bear-mk3-psu-meanwell-lrs350-rs25-body-rev2.step



bear-mk25-psu-meanwell-lrs350-rs25-body-rev2.stl



bear-mk25-psu-meanwell-lrs350-rs25-body-rev2.step



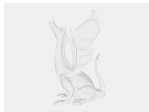
bear-psu-meanwell-lrs350-upper-mount-non-v-slot.stl



bear-psu-meanwell-lrs350-upper-mount-non-v-slot.step



bear-psu-meanwell-lrs350-upper-mount-v-slot.stl



bear-psu-meanwell-lrs350-upper-mount-v-slot.step

License ©



This work is licensed under a
[Creative Commons \(4.0 International License\)](https://creativecommons.org/licenses/by-nc/4.0/)

Attribution-NonCommercial

- ✗ | Sharing without ATTRIBUTION
- ✓ | Remix Culture allowed
- ✗ | Commercial Use
- ✗ | Free Cultural Works
- ✗ | Meets Open Definition