



Wood Ruler Marking Gauge



Ghrrum

[VIEW IN BROWSER](#)

updated 28. 11. 2022 | published 28. 11. 2022

Summary

Marking gauge for 48" ruler. Uses 25mm M5 bolt and nut



2.00 hrs



1 pcs



0.15 mm



0.25 mm



PLA



150 g



Other

[Hobby & Makers](#) > [Tools](#)

Tags: [gauge](#) [caliper](#) [calipers](#) [markinggauge](#) [verniercalipers](#)

Ruler I made this for was 6.5mm x 35mm in cross section. So pretty chonky, I should have some others up for other standard metal rulers found in the USA.

G-Code produced using the default additive post for Fusion360, so take care and know what you're doing before you jump in.

The checker on here keeps kicking back for having an M0 pause for adding M5 nut after layer 63 but before layer 64, so slice there or add g-code to do so as needed.

Here's what I added at line 19239 since I'm rocking Marlin firmware:

```
G0 X20
G0 Z 180
M104 S0 T0
M109 S100 T0
M107
M0 ADD M5 NUT
M104 S215 T0
M109 S215 T0
M106
```

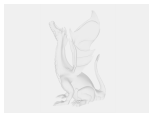
This should get the gantry and print head out of the way and let the print head cool down if you're like me and walk away from your printer and forget about it.

*Edit 20221128: Added knob to assm. and uploaded model as .stl

Model files



wood-ruler-marking-gauge-v11.stl



wood-ruler-marking-gauge-v13.f3z

Print files



wood-rule-marking-gauge.gcode

PLA 0.25 mm 0.15 mm 2.00 hrs 150 g

License

This work is licensed under a
[Creative Commons \(4.0 International License\)](https://creativecommons.org/licenses/by/4.0/)



Attribution

- ✗ | Sharing without ATTRIBUTION
- ✓ | Remix Culture allowed
- ✓ | Commercial Use
- ✓ | Free Cultural Works
- ✓ | Meets Open Definition