



Ender 2 Pro Slim Fan Duct / Shroud



TRex22

[VIEW IN BROWSER](#)

updated 28. 8. 2023 | published 28. 8. 2023

Summary

A modified slim fan shroud for support on an Ender 2 pro



0.58 hrs



1 pcs



0.20 mm



0.40 mm



PLA



4 g



Creality
Ender 2 Pro

[3D Printers](#) > [3D Printers - Upgrades](#)

Tags: [creality](#) [ender](#) [ender2pro](#) [ender2proupgrade](#)

I extended the height of the Ender 3 slim fan duct so that it would work on my Ender 2 Pro. This is still a work in progress and the print isn't super clean.

I had to extend it by about 6-7mm as the two sides clip inside the part cooling fan, rather than sit flush like the stock model.

The two sides clip inside the part cooling fan, rather than sit flush like the stock model.

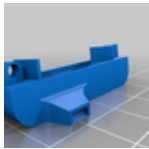
V2 doesn't have added walls. (What I'm currently using on my printer)

V3 has added walls

Id print at 0.2 mm and 10-15% infill.

PETG or ABS is probably recommended but I used PLA and wondering how long it will last.

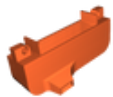
This remix is based on



Ender 3 Slim Fan Duct

by Filament

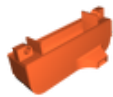
Model files



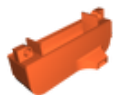
ender-2-pro-slim-fan-duct-v2.stl



ender-2-pro-slim-fan-duct-v3.stl

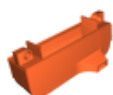


ender-2-pro-slim-fan-duct-v3-left-mirrored.stl



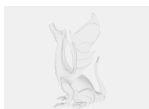
ender-2-pro-slim-fan-duct-v3-left-mirrored-02.stl

☐ Larger mounting holes for M2/3 bolts



ender-2-pro-slim-fan-duct-v3-left-mirrored-03-small... .stl

☐ Slightly changed clearance for non Creality 3010 Blower Fans



ender-2-pro-slim-fan-duct-v3-left-mirrored-04.stl

Print files



ender-2-pro-slim-fan-duct-v3-left-mirrored-03-small... .gcode

🌀 PLA 📏 0.40 mm 📏 0.20 mm ⌚ 0.58 hrs 📊 4 g

License ©

This work is licensed under a
[Creative Commons \(4.0 International License\)](#)



Attribution

-
- ✖ | Sharing without ATTRIBUTION
 - ✓ | Remix Culture allowed
 - ✓ | Commercial Use
 - ✓ | Free Cultural Works
 - ✓ | Meets Open Definition