



Asanoha Planter



Tango Five Creations

[VIEW IN BROWSER](#)

updated 26. 5. 2020 | published 26. 5. 2020

Summary

Using a neat Japanese design style called "Kumiko", this planter stands out.



8.43 hrs



2 pcs



0.30 mm



0.40 mm



PLA



179 g



Prusa
MK3/S/S+

[Household](#) > [Outdoor & Garden](#)

Tags: [planter](#) [plants](#) [deskplanter](#) [planters](#) [planterpot](#)
[planterspot](#) [cactusplanter](#) [japanese](#) [kumiko](#) [succulents](#)
[indoorplanter](#) [flowerplanter](#)

Using a neat Japanese design style called "Kumiko", this planter stands out. This particular planter is using a variation of the Asanoha pattern.

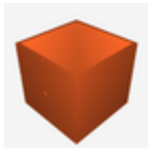
Model files



planter.stl



leg.stl



planter.3mf



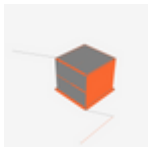
leg.3mf

Print files



leg_03mm_pla_mk3s_1h51m.gcode

🌀 PLA 🌀 0.40 mm ≡ 0.30 mm ⌚ 1.86 hrs ⚖️ 27 g 🖨️ Prusa MK3/S/S+



planter_03mm_pla_mk3s_6h34m.gcode

🌀 PLA 🌀 0.40 mm ≡ 0.30 mm ⌚ 6.57 hrs ⚖️ 152 g 🖨️ Prusa MK3/S/S+

License

This work is licensed under a
[Creative Commons \(4.0 International License\)](https://creativecommons.org/licenses/by-nc-sa/4.0/)



Attribution—Noncommercial—Share Alike

- ✗ | Sharing without ATTRIBUTION
- ✓ | Remix Culture allowed
- ✗ | Commercial Use
- ✗ | Free Cultural Works
- ✗ | Meets Open Definition