

3D MODEL ONLY



Voron v0.1 Raspberry pi camera module bracket (tilted 15°)



-INSOMNIAC-

[VIEW IN BROWSER](#)

updated 22. 11. 2022 | published 22. 11. 2022

Summary

Slightly tilted remix of Guillaume Gendrons Model, for a little more Timelapse coverage - sacrificing first layer view

[3D Printers](#) > [3D Printers - Upgrades](#)

Tags: [raspberrypicamera](#) [picam](#) [picamera](#) [raspicamv2](#)
[voron01](#)

Just a rather quick hack Remix, slicing the front off the original, and tilting it by 15 degrees, to have a little more FoV for Timelapses.
Preheat view to the nozzle is just fine, but the first layers will not be visible while being layed down.
Print as per original instructions.
Prints almost perfectly without supports. The upper part of the holes is sagging a little but it doesn't hurt their purpose at all, so it doesn't justify for enabling supports.

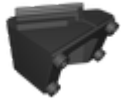
This remix is based on



Voron v0.1 Raspberry pi camera module bracket

by Guillaume Gendron

Model files



picam_bracket-15-degree-tilt-v4.3mf



picam_bracket-15-degree-tilt-v4.step

License

This work is licensed under a
GNU



General Public License v3.0

-
- ✗ | Sharing without ATTRIBUTION
 - ✓ | Remix Culture allowed
 - ✓ | Commercial Use
 - ✓ | Meets Open Definition
 - i | Share under the same license