



Maple leaf

 yoshindler

[VIEW IN BROWSER](#)

updated 22. 11. 2022 | published 22. 11. 2022

Summary

maple leaf



0.34 hrs



1 pcs



0.20 mm



0.40 mm



PLA



4 g



Prusa
MK3/S/S+

[Learning](#) > [Other 3D Objects for Learning](#)

im new to 3d printing and im trying some things on fusion360.

BTW there is no hole on the one i printed but you can print it however you want

Model files

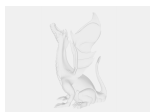


no hole

2 files



mapleleafnohole.stl

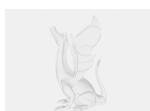


mapleleafnohole.f3d



hole

2 files



mapleleaf.f3d



mapleleaf.stl

Print files



mapleleaf_02mm_pla_mk3s_20m.gcode

PLA 0.40 mm 0.20 mm 0.34 hrs 4 g Prusa MK3/S/S+

License ©



This work is licensed under a
[Creative Commons \(4.0 International License\)](#)

Attribution-NonCommercial

✖ | Sharing without ATTRIBUTION

- ✓ | Remix Culture allowed
- ✗ | Commercial Use
- ✗ | Free Cultural Works
- ✗ | Meets Open Definition