



## Cannula oxygen hose fitting

B

Blake Haas

[VIEW IN BROWSER](#)

updated 22. 11. 2022 | published 22. 11. 2022

### Summary

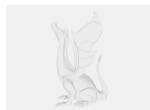
This is a fitting that will secure a wide opening or threaded cannula to a standard press fit oxygen hose.

[Healthcare](#) > [Home Medical Tools](#)

Tags: [oxygen](#) [cannulla](#)

If you have a threaded cannula, this model will allow you to press fit into it and then secure it from having it be pulled out. Print with PETG or PLA 30% infill. 0.2mm layer height.

### Model files



**oxyadapter.stl**

# License

This work is licensed under a  
**Creative Commons (International License)**



## **Public Domain**

---

- ✓ | Sharing without ATTRIBUTION
- ✓ | Remix Culture allowed
- ✓ | Commercial Use
- ✓ | Free Cultural Works
- ✓ | Meets Open Definition