



Gameboy pocket DX | AA conversion shell



CatchMyDrift?

[VIEW IN BROWSER](#)

updated 22. 5. 2023 | published 22. 5. 2023

Summary

A custom gameboy pocket shell designed to convert the gameboy pocket over to AA batteries.

[Gadgets](#) > [Video Games](#)

Tags: [gameboy](#) [gameboypocket](#) [nintendo](#) [retro](#)
[retrogaming](#) [funnyplaying](#) [gameboylight](#)
[handheldgamedevice](#) [videogames](#) [classic](#) [edc](#)
[gameandwatch](#) [gaming](#) [mario](#) [modding](#) [nostalgia](#)
[replacement](#) [shell](#) [zelda](#) [retrofutur](#)

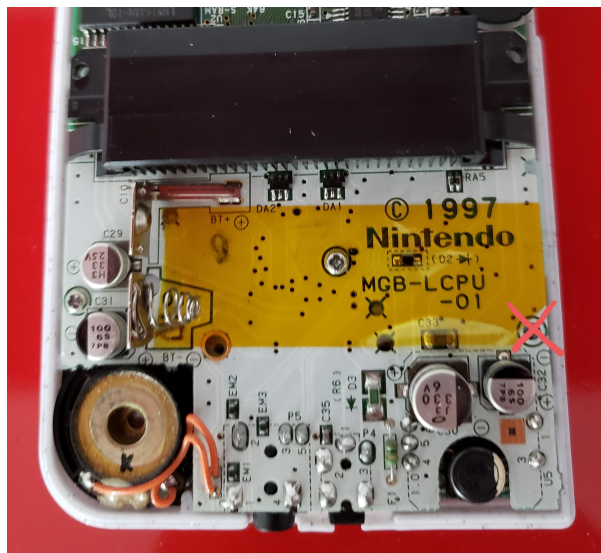
This is my custom gameboy pocket shell that converts the pocket from using AAA batteries to AAs. I was looking at doing an IPS mod to one of my pockets, and I found out they get pretty poor battery life with an IPS panel. That's not cool. I wanted to have my cake and eat it too, so I found gingerbreadnerd's gameboy pocket shell on thingiverse and used that as a base for this design. I designed this shell to let me add larger batteries without modifying anything permanently, and while still keeping the general gameboy pocket/gameboy light feel and aesthetics.

Printing

Each part should be in the right orientation for printing. I recommend using 0.2mm layer heights or smaller for this, and you'll want to have your supports tuned because the rear shell requires a lot of support. For material I used PLA+/PLA pro.

Assembly

This shell goes together just like your OEM style gameboy pocket shell, except a couple screws have been left out. The screws that were left out were the two screws for the shell normally inside the battery compartment, and one for the board in the bottom right. In order to fit AAs, I had to remove the bottom of the battery tray, so the batteries will be in direct contact with the motherboard. I recommend using a layer of kapton (or other) tape on the motherboard where the batteries go just for extra insurance. Something more to note, the locating pins for the membranes are very thin, so take extra care around them. Also if your A and B buttons bind up at all, you may want to consider carefully rounding the edges on the buttons themselves with some fine sandpaper.



If you would like to donate to help fuel my gameboy addiction I would greatly appreciate it :)

<https://www.paypal.me/Kmurray2>

Original shell design: <https://www.thingiverse.com/thing:5187470>

Update 11/28/22: Fixed some minor issues with fitment, and made the front shell more compatible with the funnyplaying ips kit.

Update 12/1/22: Fixed issues with screw holes not lining up, plus some other minor improvements.

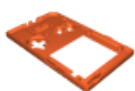
Update 12/9/22: Fixed an issue with membranes being compressed causing the shell to not go together nicely. Buttons have been moved outwards slightly.

Update 12/13/22: Minor aesthetic and functional improvements.

Update 1/8/23: Minor aesthetic and functional improvements.

Update 3/13/23: Redesigned the rear shell to allow the cartridge shield to be installed.

Model files



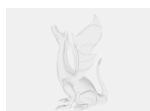
pocketdx_frontshell-v7.stl



pocketdx_rearshell-v7.stl



pocketdx_batterycover-v7.stl



custom-pocket-aa-shell-v27.step

License ©

This work is licensed under a
[Creative Commons \(4.0 International License\)](https://creativecommons.org/licenses/by/4.0/)



Attribution

✗ | Sharing without ATTRIBUTION

- ✓ | Remix Culture allowed
- ✓ | Commercial Use
- ✓ | Free Cultural Works
- ✓ | Meets Open Definition