



Spinning Top by our engineers



Prusament

[VIEW IN BROWSER](#)

updated 5. 12. 2022 | published 5. 12. 2022

Summary

The model of the Spinning Top designed by our engineers. It consists of 10 parts that can be easily folded together.



22.58 hrs



4 pcs



0.20 mm



0.40 mm



PET



258 g



Prusa
MK3/S/S+

[Toys & Games](#) > [Other Toys & Games](#)

The model of the Spinning Top was designed by our engineers. It consists of 10 parts that can be easily folded together.

Easy to print.

We recommend printing from PETG (PLA optional).

No supports are needed.

You will need:

9x screw M2,5 x 10 mm

The presented model is printed from Prusaments:

- PETG Carmine Red Transparent
- PETG Clear
- PETG Prusa Orange

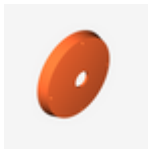
- PETG Jet Black

Designed by Josef Franc ([ropak](#)).
Enjoy :-)

Model files



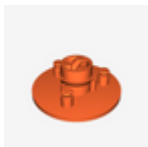
big-ring_50.stl



freewheel-base_50.stl



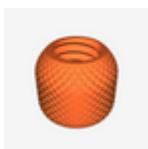
bottom-cover_50.stl



fast-freewheel_50.stl



fast_rod-_50.stl



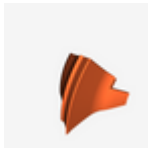
handle_50.stl



ratchet_50.stl



ring_50.stl



segment_ring_50.stl



segment_50.stl



stop_50.stl



tip_50.stl



top-cover_50.stl

Print files



3colors_big-ring_50_02mm_petg_mk3s_4h4m.gcode

⚙ PET ⚙ 0.40 mm ⚙ 0.20 mm ⌚ 4.07 hrs ⚖ 67 g 🖨 Prusa MK3/S/S+



7_parts_50_02mm_petg_mk3s_4h55m.gcode

⚙ PET ⚙ 0.40 mm ⚙ 0.20 mm ⌚ 4.92 hrs ⚖ 55 g 🖨 Prusa MK3/S/S+



segment_2_parts_50_02mm_petg_mk3s_5h3m.gcode

⚙ PET ⚙ 0.40 mm ⚙ 0.20 mm ⌚ 5.05 hrs ⚖ 43 g 🖨 Prusa MK3/S/S+



segment_ring_fast_rod_50_02mm_petg_mk3s_8h32m.gcode

🌐 PET 🌀 0.40 mm ≡ 0.20 mm ⌚ 8.54 hrs ⚖️ 94 g 🖨️ Prusa MK3/S/S+

License ©



This work is licensed under a
[Creative Commons \(4.0 International License\)](#)

Attribution-NonCommercial

- ✗ | Sharing without ATTRIBUTION
- ✓ | Remix Culture allowed
- ✗ | Commercial Use
- ✗ | Free Cultural Works
- ✗ | Meets Open Definition