

"DESKA" ALLIN1CUBE test cube for testing 3d printer performance-BETA



SkatePL

[VIEW IN BROWSER](#)

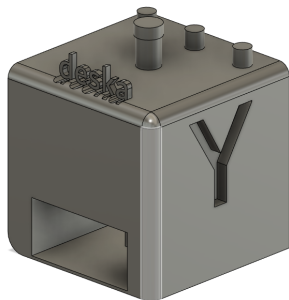
updated 22. 11. 2022 | published 22. 11. 2022

Summary

enjoy printing! ;)

[3D Printers](#) > [Test Models](#)

I create this test cube to test most of the important 3d printer features such as printing overhangs, bridges or letters . This model also include retraction test and diamension test-all walls should be 30,00mm .



Model files



deska-allin1cube.stl



deska-allin1cube.obj

License

This work is licensed under a
[Creative Commons \(4.0 International License\)](https://creativecommons.org/licenses/by-nc/4.0/)



Attribution-NonCommercial

-
- ✗ | Sharing without ATTRIBUTION
 - ✓ | Remix Culture allowed
 - ✗ | Commercial Use
 - ✗ | Free Cultural Works
 - ✗ | Meets Open Definition