

Corner Support Brace (#8 Screws)



moxieman19

[VIEW IN BROWSER](#)

updated 24. 11. 2022 | published 24. 11. 2022

Summary

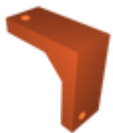
A simple support brace for an internal corner.

[Hobby & Makers](#) > [Other Ideas](#)

A simple support brace for an internal corner. Keeps the two mounted faces at a sturdy 90° angle. Holes are sized for #8 Wood Screws. Works great when printed in PETG, I haven't tested other filaments yet.

Don't use supports in the screw holes. And don't overtighten the screws when installing, or else the brace may crack.

Model files



joint-support-corner.stl

License

This work is licensed under a
Creative Commons (International License)



Public Domain

- ✓ | Sharing without ATTRIBUTION
- ✓ | Remix Culture allowed
- ✓ | Commercial Use
- ✓ | Free Cultural Works
- ✓ | Meets Open Definition