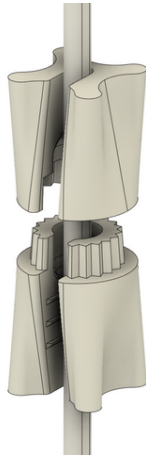


3D MODEL ONLY



Cable Twister for Lamps



Cederb

[VIEW IN BROWSER](#)

updated 24. 12. 2022 | published 24. 12. 2022

Summary

Ever had that problem when your hanging lamp refused to sit straight? This fixes it!

[Household](#) > [Home Decor](#)

Tags: [light](#) [lamp](#) [cable](#) [window](#) [cablemanagement](#)
[cableclip](#) [cableguide](#) [christmaslights](#) [twister](#)
[christmaslighting](#)

The lower part of this print is meant to grip on tightly onto a flat 2x0.75mm² lamp cable with an outer dimension of 3.5x7mm, and then you use the upper part to twist/adjust the cable until your lamp hangs at your preferred angle.

Here in Sweden, we mostly use these for advent stars that are hanging in our windows during Christmas, but you can use them for any kind of hanging lamp with a non-symmetrical shape. Designed with a 0.15mm space between the mating parts, in combination with a tapered fit, so it should really not be demanding of your printer tolerance-wise.

Model files



kabelsnurr-1.stl



kabelsnurr-2-v2.stl

License

This work is licensed under a
[Creative Commons \(4.0 International License\)](https://creativecommons.org/licenses/by-sa/4.0/)



Attribution-ShareAlike

-
- ✗ | Sharing without ATTRIBUTION
 - ✓ | Remix Culture allowed
 - ✓ | Commercial Use
 - ✓ | Free Cultural Works
 - ✓ | Meets Open Definition