

Mellow Fly SHT42 CAN board mounting system for BIQU H2



Robert Samples

[VIEW IN BROWSER](#)

updated 23. 11. 2022 | published 23. 11. 2022

Summary

Mounting system for Mellow Fly SHT42 CAN bus board and will probably work with the BTT EBB42 board.

[3D Printers](#) > [3D Printers - Upgrades](#)

Tags: [can](#) [biquh2](#) [canbus](#) [sht42](#) [ebb42](#) [neptune3](#)
[elegooneptune3](#)

Mounting system for Mellow Fly SHT42 CAN bus board and will probably work with the BTT EBB42 board. Includes mounting plate for the CAN board remixed from Scout13's original version with longer standoffs, motor holes sunken slightly, and 4.5 mm holes for heatset inserts. Cables can be routed through the side of the cover plate. The cable mount takes strain off the molex 4.2 connector and attaches to the top of the extruder and allows a 7 mm OD cable with 4 wire 18 AWG cable to be inserted. I designed the cable mount to be used with a mounting bracket that extends across the top (4mm bracket) but it can be modified as needed with the included STEP file.

You will need the following screws:

5x 8mm or 12mm M3 button head screws

3x 20 mm M3 countersunk screws

1x 30 mm M3 button head screw

You may not need them but 3-4 4 mm M3 heat set inserts are recommended for the board mounting plate.

Other components used in this setup:

Mounting adapter for Elegoo Neptune 3: <https://www.printables.com/model/323225-biqu-h2-v2-mount-for-elegoo-neptune-3>

BLTouch mount for front fan: <https://www.thingiverse.com/thing:4893522>

Fan duct: <https://thangs.com/designer/novocane/3d-model/BQU%20H2%20Extruder%20Front%20Mount%205015%20Fan%20Duct-31254>

Fan duct mounting plate: <https://www.thingiverse.com/thing:4682915>

This remix is based on



Biqu H2 EBB42 Adapter
by Sout13

Model files



cablemount.stl



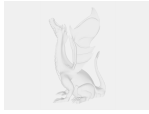
boardcover.stl



motormount.stl



boardcover.step



motormount.step



cablemount.step

License ©

This work is licensed under a
Creative Commons (4.0 International License)



Attribution

- ✗ | Sharing without ATTRIBUTION
- ✓ | Remix Culture allowed
- ✓ | Commercial Use
- ✓ | Free Cultural Works
- ✓ | Meets Open Definition