



BOSCH GEX 125-150 AVE Vacuum Adapter



lackac

[VIEW IN BROWSER](#)

updated 1. 6. 2020 | published 1. 6. 2020

Summary

This is a vacuum adapter for Bosch GEX 125-150 AVE random orbit sanders.



3.93 hrs



1 pcs



0.20 mm



0.40 mm



Flex



23 g



Prusa
MK3/S/S+

[Hobby & Makers](#) > [Tools](#)

Tags: [bosch](#) [sander](#) [vacuum](#) [vacuumadapter](#) [orbitalsander](#)
[boschgex](#)

This is a vacuum adapter for Bosch GEX 125-150 AVE random orbit sanders. It uses the same design for attaching to the sander as the official Bosch adapters. The gcode is for printing with Flexible filament. I used Fillamentum Flexfill 98A with good results.

First I used 25% infill which might be a bit much, because it is a bit difficult to put the adapter on the sander. Once it's on it doesn't come off easily but rotates freely. You can try 10% infill for an easier fit.

The Fusion 360 model file has some user parameters you can play with for a different vacuum hose diameter.

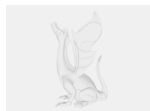
Print instructions

I printed with 0.2mm layer height. Differences from the stock PrusaSlicer 2.2.0 Flexfill 98A settings:

- extrusion multiplier: 1.1
- keep fan always on at 70%
- retraction length: 1.2mm
- lift Z: 0.6mm
- max print speed: 30 mm/s

Print with 25% infill or less. 5-10% infill will be easier to put on and off if you're planning to switch between adapters or dust bags.

Model files



bosch-gex-125-150-ave-vacuum-adapter.f3d

Print files



bosch-gex-vacuum-adapter-35_02mm_10_flex_mk3s_3.gcode

⚙ Flex ⚙ 0.40 mm ⚙ 0.20 mm ⌚ 3.93 hrs ⚖ 23 g 🖨 Prusa MK3/S/S+

[Find source .stl files on Thingiverse.com](#)

License ©

This work is licensed under a
Creative Commons (4.0 International License)



Attribution-ShareAlike

- ✘ | Sharing without ATTRIBUTION
- ✓ | Remix Culture allowed
- ✓ | Commercial Use
- ✓ | Free Cultural Works
- ✓ | Meets Open Definition