



ESP32 case for Wifi NTP clock



ywabiko

[VIEW IN BROWSER](#)

updated 29. 11. 2022 | published 29. 11. 2022

Summary

A case for ESP32 Wrover DevKit V4.1 with an optional stand.

[Hobby & Makers](#) > [Electronics](#)

Tags: [esp32](#) [wrover](#) [ntp](#)

This is a case for [ESP32 Wrover DevKit V4.1](#).

Usage scenario:

Wifi NTP Clock (I just want an accurate clock. Nothing else! haha)

A simple case for your tinkering:)

This consists of 3 models.

Case

Lid (optional)

Stand (optional)

Mounting options:

Dedicated stand above.

VESA 50mm (monitor arms etc).

Wall mount (a small wall hook).

On the backside, the case implements these.

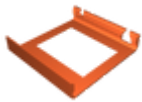
- 2x built-in buttons for EN and BOOT. No need for a couple screw drivers to push them:)
- 1x hole for the RGB LED light to come through.
- 2x holes for small wall mount hooks.
- 4x M4 screw holes for VESA 50mm mounts.
- 1x M4 screw hole at the center for other mounting options.

I'm sharing Fusion 360 design files for easier remix. Enjoy!

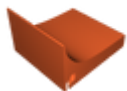
Model files



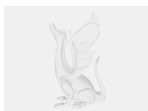
wrover-devkit-v41-case-v184.stl



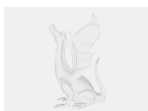
wrover-devkit-v41-lid-v20.stl



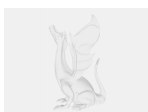
wrover-devkit-stand-v18.stl



wrover-devkit-v41-case-v184.f3z



wrover-devkit-v41-lid-v20.f3z



wrover-devkit-stand-v18.f3z

License ©

This work is licensed under a
Creative Commons (4.0 International License)



Attribution

- ✗ | Sharing without ATTRIBUTION
- ✓ | Remix Culture allowed
- ✓ | Commercial Use
- ✓ | Free Cultural Works
- ✓ | Meets Open Definition