



El Tigre - El Mirador , Guatemala



MiniWorld3D

[VIEW IN BROWSER](#)

updated 21. 2. 2023 | published 21. 2. 2023

Summary

El Tigre pyramid complex is one of the largest structures in the ancient Mayan city of El Mirador, in northern Guatemala

[World & Scans](#) > [Historical Context](#)

Tags: [structure](#) [miniature](#) [jungle](#) [architecture](#) [building](#)
[miniworld](#) [miniworld3d](#) [maya](#) [pyramid](#) [mexican](#)
[architect](#) [ruins](#) [ancient](#) [architecturalmodel](#) [ancientegypt](#)
[ancienthistory](#) [aztec](#) [guatemala](#) [tikal](#) [mexico](#) [mayan](#)
[pyramide](#) [piramide](#) [tigre](#) [pyramids](#) [ancientcivilizations](#)
[precolumbian](#) [ancientruins](#) [prehispanic](#) [toltec](#)
[mesoamerica](#) [azteca](#) [piramides](#) [guatemalan](#) [peten](#)
[chapin](#) [eltigre](#) [elmirador](#) [mesoamerican](#)

Welcome to Guatemala!

The Ancient Ruins Collection - Mesoamerica is a dedicated sub-collection to the legacy of past civilizations in parts of what is present-day Mexico and Central America.

This model was designed by [Leonardo Almírez](#).

El Mirador, which translates as “The Lookout” or “The Viewpoint”, is a large ancient Mayan settlement in Petén, northern Guatemala.

Its ruins were first noted in the 1880's but not mapped or studied until the 1970's. This settlement predates by centuries other large Maya cities in the area, like **Tikal** and **Uaxactun**. Instead, El Mirador flourished from about the 6th century BCE to the 1st century CE, peaking during the 3rd century BCE. It was finally abandoned by the 9th century CE.

The civic center of the site covers some 10 square miles (26 km²) with several thousand structures, including monumental "triadic" structures, large artificial platforms topped with a set of 3 summit pyramids: a main one and two secondary ones facing inwards. The most notable are three huge complexes; one nicknamed **El Tigre**, with a height of 55 meters (180 ft) and depicted in this model; another is called **La Danta**, at 72 meters (236 ft) tall from the forest floor, and lastly, **Los Monos** at 48 meters high (158 ft).

Considering total volume (around 2,800,000 cubic meters) these are some of the largest pyramids and ancient structures in the world. Most of the structures were originally clad with cut stone which was then decorated with large **stucco** masks depicting the deities of **Maya mythology** (from [Wikipedia](#)).

MiniWorld 3D is excited to bring this historical model to life as a homage to all the people of Guatemala. This model was created from scratch by hand and brain in parametric software to ensure printability, using photographs and blueprints to create a beautiful and stylized version of your favorite landmarks. Please give credit, it's all about spreading culture!

Be sure to follow us:

[instagram.com/miniworld3d](https://www.instagram.com/miniworld3d)

[instagram.com/leo_almirez](https://www.instagram.com/leo_almirez)

MiniWorld 3D is a collective of 45+ artists creating the best library of 3D printable models of landmarks of the world!

Photo credits: mint background renderings by Artemio García, others by Leo Almiréz.

Printing Tips

Suggested parameters:

For better details, print slow, such as 15 or 20mm/s for outer perimeters.
Fine-tune retraction to avoid stringing.

Perimeters: 2

Top layers: 3

Infill: as low as 12%

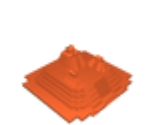
No supports needed, this has been optimized to eliminate all overhangs.

This remix is based on



Mayan - Aztec Collection | 3D model

Model files



el-tigre-el-mirador-by-leonardo-almirez.stl

License

This work is licensed under a
Creative Commons (4.0 International License)



Attribution—Noncommercial—No Derivatives

-
- ✗ | Sharing without ATTRIBUTION
 - ✗ | Remix Culture allowed
 - ✗ | Commercial Use
 - ✗ | Free Cultural Works
 - ✗ | Meets Open Definition