



Wolfcraft MasterCut Work table router guide repair



jcjames_13009

[VIEW IN BROWSER](#)

updated 2. 1. 2023 | published 2. 1. 2023

Summary

My brother bought a 2nd hand work table router with the guide broken. He asked me for a 3D printing repair...



3.13 hrs



1 pcs



0.20 mm



0.40 mm



PET



35 g



Prusa MINI /
MINI+

[Hobby & Makers](#) > [Tools](#)

Tags: [router](#) [guide](#) [repair](#) [wolfcraft](#) [mastercut](#)

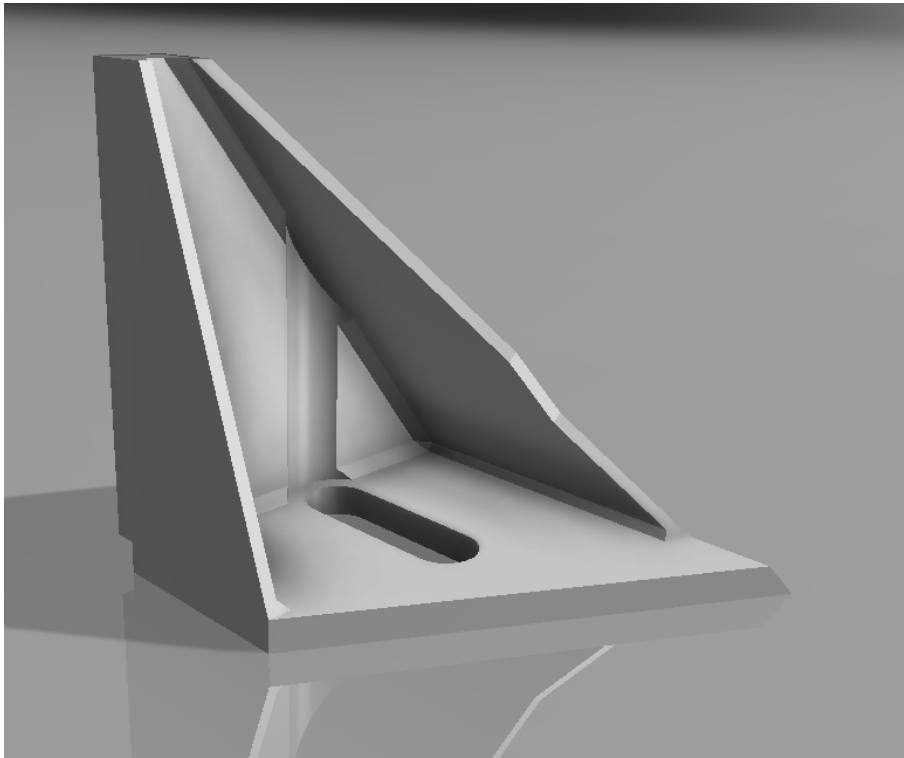
Of course the part is almost impossible to find or at a high price.

At first I thought I would do the complete guide in two separated parts because it was too big for my printer. Then I figured why not just make a piece that fits in the broken part and stick it

I clean the damaged part with saw and file



Then I took all the dimensions to design the part in Fusion 360. The bottom part is 5.2mm thick and the side walls 2mm which seems to be strong enough



Part has been printed in Prusament PETG Jet Black with 0.20mm layer height and 3 perimeters. Other PrusaSlicer parameters remaining default ones



Assembly on broken part after minor adjustments. Result looks good



Next step stick both parts together using bi-component glue before mounting and testing it. I'll post pictures later

On top of .stl and .3mf files, I uploaded Fusion 360 .f3d file so you can modify the design and adapt it to your needs

As usual, feedback and comments (and for sure "likes") will be always welcome. Feel free to post also nice pictures of your makes

Enjoy

If you like this model, take a look also at [my other designs](#)

EDIT 28/11/2022

The guide belongs to Wolfcraft MasterCut work table



Model files



piece-reparation-guide.stl



piece-reparation-guide.3mf



guide-defonceuse-sous-table-daniel-v5.f3d

Print files



piece-reparation-guide_02mm_3p_petg_250_mini_3h8m_2... .gcode

PET 0.40 mm 0.20 mm 3.13 hrs 35 g Prusa MINI / MINI+

License

This work is licensed under a
[Creative Commons \(4.0 International License\)](#)



Attribution—Noncommercial—Share Alike

-
- ✗ | Sharing without ATTRIBUTION
 - ✓ | Remix Culture allowed
 - ✗ | Commercial Use
 - ✗ | Free Cultural Works
 - ✗ | Meets Open Definition