



Customizable Snow Globe - Ornament Edition



Scennie Makes

[VIEW IN BROWSER](#)

updated 24. 11. 2022 | published 24. 11. 2022

Summary

An easily printable snow globe you can customize the scene within using different panels, now with a hanging loop option

[Seasonal designs](#) > [Winter & Christmas & New Year's](#)

Tags: [christmas](#) [assembly](#) [kids](#) [snow](#) [fun](#) [customizable](#)
[panels](#) [xmas](#) [holiday](#) [snowglobe](#) [globe](#)

[Looking for the original tabletop version? Check it out here!](#)

An updated version of my snow globe model, now with the option for adding a ribbon loop! Scaled down to about 70% of the original design to fit on a tree easier.

Create your own snow globe by picking which panes to print and slotting them into the base! The base can support up to 3 panes at a time. A full snow globe can be printed/assembled in ~2.5 hours. I'd recommend selecting your middle pane in the 'loop' version if you intend on hanging it.

ASSEMBLY:

Print 1x Snowglobe_Base and 3x panes of your choice. Slot panes into the corresponding spots on the base. Depending on the tolerances of your printer you will likely need to glue in the panes with glue to hold them into the base. There are now slots in the bottom for easier gluing. Best results come from printing/painting panes in different colors to create a layered

effect.


TROUBLESHOOTING:


If the fit is tight you can try filing/deburring the sides of the tab to make it slide in easier, if the panes are too thick you can either clear out the slots in the base using the same method or scale the Z slightly down. I adjusted my Z height partway through printing these and noticed my parts didn't want to fit anymore, so it might be an option for you as well.


Thank you all for all of your support on my previous design, I hope you enjoy this one as well :)


-Allison, Sconnie Makes


Model files


 **3mf** 3 files

**ornament_all_files.3mf**

**ornament_loop_only.3mf**

**ornament_no_loop_only.3mf**

 **Panels - No Loop .stl** 13 files

**presents_ornament.stl**



blank_ornament.stl



snowman_ornament.stl



lights_ornament.stl



mountain_ornament.stl



dog_ornament.stl



house_ornament.stl



cat_ornament.stl



penguin_ornament.stl



santa_ornament.stl



snow_ornament.stl



stars_ornament.stl



trees_ornament.stl



Panels - Loop .stl

13 files



dog_ornament_loop.stl



cat_ornament_loop.stl



presents_ornament_loop.stl



penguin_ornament_loop.stl



stars_ornament_loop.stl



blank_ornament_loop.stl



snow_ornament_loop.stl



lights_ornament_loop.stl



snowman_ornament_loop.stl



mountain_ornament_loop.stl



santa_ornament_loop.stl



house_ornament_loop.stl



trees_ornament_loop.stl



DXF

14 files



loop_only.dwg



snow_ornament.dwg



mountain_ornament.dwg



stars_ornament.dwg



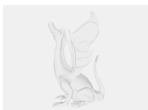
lights_ornament.dwg



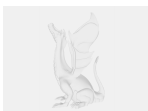
dog_ornament.dwg



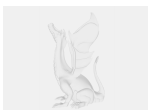
santa_ornament.dwg



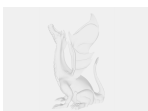
house_ornament.dwg



penguin_ornament.dwg



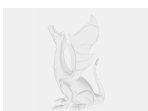
trees_ornament.dwg



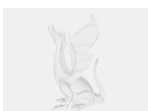
blank_ornament.dwg



cat_ornament.dwg



snowman_ornament.dwg



presents_ornament.dwg



snowglobe_base.stl

License ©

This work is licensed under a
[Creative Commons \(4.0 International License\)](#)



Attribution-NonCommercial

- ✗ | Sharing without ATTRIBUTION
- ✓ | Remix Culture allowed
- ✗ | Commercial Use
- ✗ | Free Cultural Works
- ✗ | Meets Open Definition