



Ender 3 (v2) Rocker Switch Box



Alex Krush

VIEW IN BROWSER

updated 23. 11. 2022 | published 23. 11. 2022

Summary

Rocker switch box for the front of the Ender 3

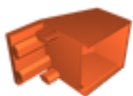
[3D Printers](#) > [3D Printers - Upgrades](#)

Tags: [box](#) [switch](#) [ender3](#) [ender3v2](#)

Rocker switch box for the front of the Ender 3 that works with these
[https://www.amazon.com/gp/product/B07QKFD7Z7/
ref=ppx_yo_dt_b_search_asin_title?ie=UTF8&psc=1](https://www.amazon.com/gp/product/B07QKFD7Z7/ref=ppx_yo_dt_b_search_asin_title?ie=UTF8&psc=1)

I have the PSU power to the main board switched through here so that I can control it from the front and also power other devices (like a RPi) from the PSU without shutting everything off

Model files



ender-3-covered-switch-box.stl



ender-3-switch-box-bottom-cover.stl

License

This work is licensed under a
[Creative Commons \(4.0 International License\)](#)



Attribution

- ✗ | Sharing without ATTRIBUTION
- ✓ | Remix Culture allowed
- ✓ | Commercial Use
- ✓ | Free Cultural Works
- ✓ | Meets Open Definition