



Nintendo Switch 45° Stands for JoyCon Channels



Micro Center

[VIEW IN BROWSER](#)

updated 23. 11. 2022 | published 23. 11. 2022

Summary

Simple 45° stands for the Joycon slots on the Nintendo Switch.

[Gadgets](#) > [Video Games](#)

Tags: [christmas](#) [nintendo](#) [christmasgift](#) [joycon](#)
[nintendoswitch](#) [nintendojoycon](#) [joycongrip](#) [inland](#)
[microcenterfilament](#) [inlandfilament](#)

Simple 45° stands for the Joycon slots on the Nintendo Switch. Makes it easier and more comfortable to play on a table than the built in stand. For fun print one in red and one in blue!

The V2 is slimmer for a slightly quicker print and more portable than the original.

V3 is an attempt for making it large and tall enough to accommodate a charging cable at the bottom...untested please let me know if it works.

Print Settings

Printer Brand: Printrbot

Printer: Simple Black

Rafts: Yes

Supports: Yes


Resolution: .15


Infill: 20


Filament Brand: Inland


Type: PLA

Model files

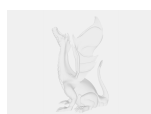
 **files** 3 files

 **switchpropforchargingv3.stl**

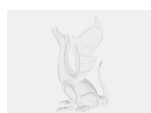
 **switchpropv2slim.stl**

 **switch_prop_2.stl**

Other files



readme.txt



license.txt

License

This work is licensed under a
Creative Commons (4.0 International License)



Attribution-NonCommercial

- ✗ | Sharing without ATTRIBUTION
- ✓ | Remix Culture allowed
- ✗ | Commercial Use
- ✗ | Free Cultural Works
- ✗ | Meets Open Definition