



PowerPole connector for QCX mini



3dham

VIEW IN BROWSER

updated 24. 11. 2022 | published 24. 11. 2022

Summary

The QCX mini has a barrel connector for power. This print allows to use a PowerPole connector to connect a power source.



0.98 hrs



1 pcs



0.15 mm



0.40 mm



PLA



6 g



Prusa MINI /
MINI+

[Hobby & Makers](#) > [Electronics](#)

Tags: [hamradio](#) [powerpole](#) [qrp](#) [qrplabs](#) [qcxmini](#)

Connect your PowerPole cables directly to the QCX mini!

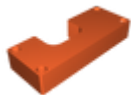
Additional material required:

- A barrel connector like this one:
 - <https://www.reichelt.de/hohlstecker-ohne-knickschutz-aussen-5-5-mm-innen-2-1-mm-hsw-21-9-p8664.html>
- 4 M2.5 screws 16mm
- A few centimeters of insulated wires
- A pair of PowerPole connectors (2 housings, 2 contacts)

After printing the housing of this connector, solder the red PowerPole connector to the center pin of the barrel connector and the black one to the sleeve contact.

Insert the assembly, remove screws from QCX mini and fix the connector to the QCX mini's enclosure using the four M2.5 screws.

Model files



qcxminipowerpole.stl

Print files



qcxminipowerpole_015mm_pla_mini_59m.gcode

PLA 0.40 mm 0.15 mm 0.98 hrs 6 g Prusa MINI / MINI+

License

This work is licensed under a
[Creative Commons \(4.0 International License\)](https://creativecommons.org/licenses/by-nc-nd/4.0/)



Attribution—Noncommercial—No Derivatives

-
- ✗ | Sharing without ATTRIBUTION
 - ✗ | Remix Culture allowed
 - ✗ | Commercial Use
 - ✗ | Free Cultural Works
 - ✗ | Meets Open Definition