

Mount plate for H2 Revo on Ender 3 V2 w/ Linear Rails



Tyler Brotherton

[VIEW IN BROWSER](#)

updated 7. 12. 2022 | published 7. 12. 2022

Summary

Biqu H2 Mounting plate to fit Linear Rail carriage on Ender 3 V2

[3D Printers](#) > [3D Printers - Upgrades](#)

Tags: [linearrail](#) [ender3v2](#) [biquh2](#) [biquh2mount](#)

!!!UPDATE 12/07/2022!!!

Finally got this installed, and all 4 carriage plate holes line up now! Feels much more stable than my old version!

I am using the DORUNDEA X-Axis Linear Rail kit from Amazon, which is designed for the stock Ender 3 V2 hotend setup, so I needed a mount that would work. This bolts into the standoffs for the original hotend, as well as the threaded holes in the plate intended for an ABL. Very solid mount, and gives enough clearance to mount the H2 along with all of the M.A.D. accessories, including the remixes I have done, and has relief pockets for the domed linear rail screws to set in, so that it sits flush to the carriage plate. Gives you just enough room between the gantry and the plate to be able to bolt the H2 on after you attach this to the carriage plate. Uses the side, and bottom mount holes on the H2 to give it a nice solid mount while still clearing the M.A.D. #4 part cooling duct, and is aligned so that the carriage still hits the X endstop, and puts the nozzle in the stock X coordinates when homed. With the linear rail kit, and this mount, I have

lost around 27mm of Y axis movement, but I am working on some Y-axis adapters to account for this, and regain my original build volume! Stay tuned!

Printed on an Ender 3 V2 with the Biqu H2 V2S Revo and a 0.4mm nozzle at 0.16mm layer height with red ApolloX, 245 on the nozzle, 80 on the bed, using Kapton tape on the build plate for adhesion. 60-70mm/s and I used 75% cooling fan.

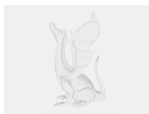
This remix is based on



MAD - Modular Air Duct for BIQU H2 / H2 V2S REVO / H2 V2S Lite

by Predy

Model files



h2-revo-mount-plate.step



h2-revo-mount-plate.stl

License ©

This work is licensed under a
[Creative Commons \(4.0 International License\)](#)



Attribution—Noncommercial—Share Alike

-
- ✗ | Sharing without ATTRIBUTION
 - ✓ | Remix Culture allowed

- ✖ | Commercial Use
- ✖ | Free Cultural Works
- ✖ | Meets Open Definition