



Choo Choo Choose M3 Buggy



Jamie Claye

[VIEW IN BROWSER](#)

updated 24. 11. 2022 | published 24. 11. 2022

Summary

Back before there was electric, there was STEAM PUNK, and where better to cruise but at Burning Man?

[Toys & Games](#) > [Vehicles](#)

Tags: [benchmark](#) [e3d](#) [train](#)

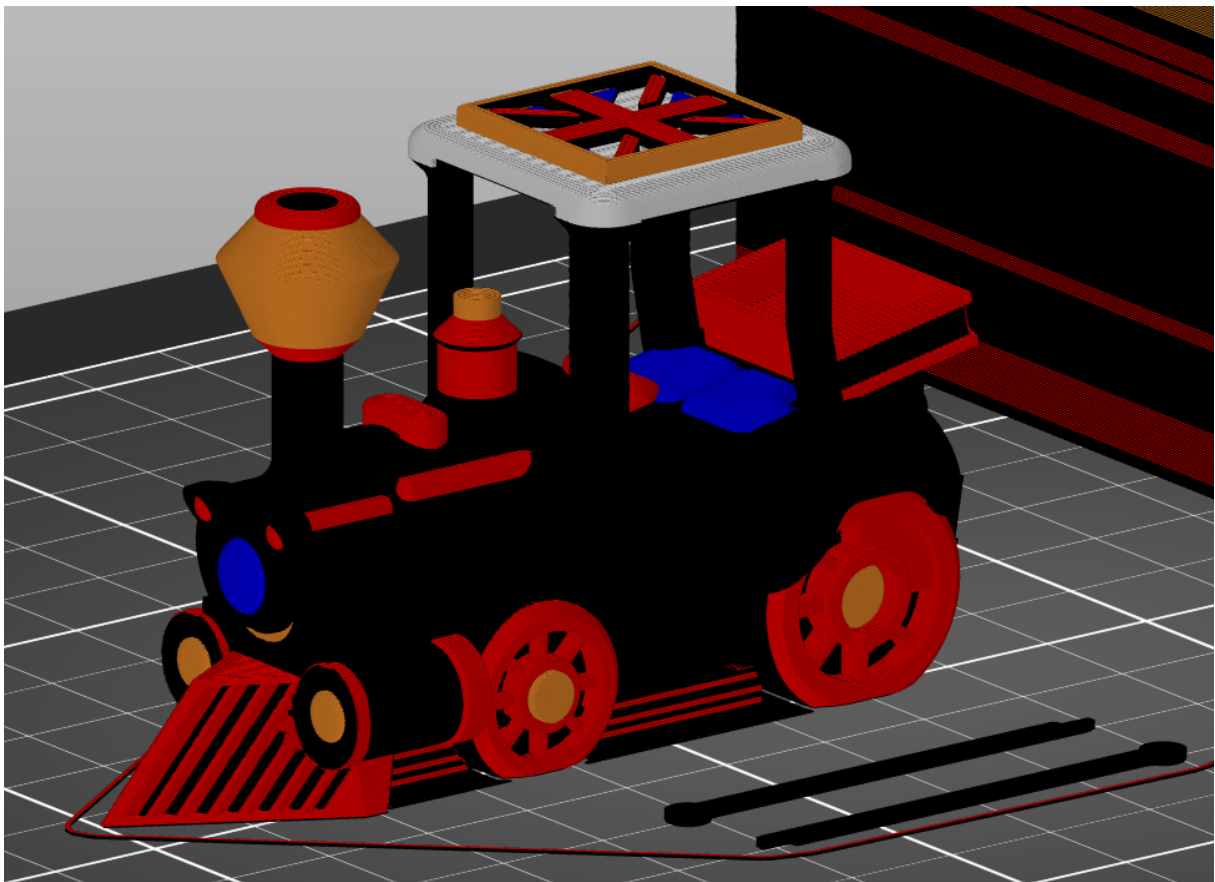
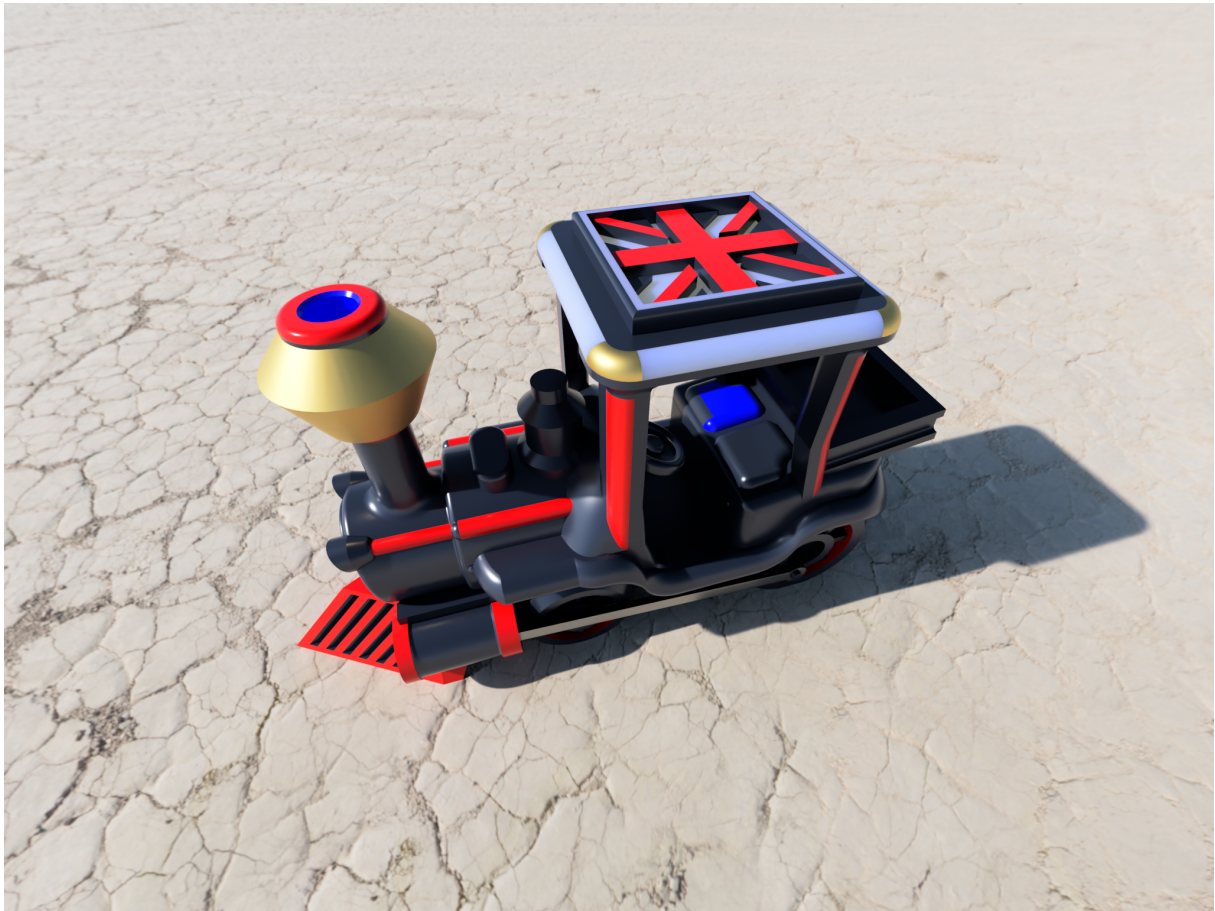
Choo Choo Choose M3 ED3 Buggy

Actually this is a double remix, a mash-up, a fusion. The E3D + **Arsea** my Benchy companion twain.

You'll have fun torturing your printer with this Burning Man escapee - the drive rods are printed separately, just to make it a little easier on your poor baby.

Minor update: I tweaked the model and even did a PrusaSlicer paint job that is similar to the rendering here. I've not printed this in multi-color - it'll probably be quite the challenge.
Anyway - enjoy.





This remix is based on



E3DBuggy ~ A 3D Printer stress test

by E3D

Model files



choo-choo-choose-me.stl



drive-rod.stl



choo-choo-choose-m3-painted.3mf



choo-choo-choose-me.step

License

This work is licensed under a
Creative Commons (4.0 International License)



Attribution-ShareAlike

- ✗ | Sharing without ATTRIBUTION
- ✓ | Remix Culture allowed
- ✓ | Commercial Use
- ✓ | Free Cultural Works
- ✓ | Meets Open Definition

