



Dual battery carrying handle compatible with Ryobi 18v



JPMakesStuff

[VIEW IN BROWSER](#)

updated 1. 3. 2024 | published 1. 3. 2024

Summary

When have you ever needed just one battery on a job?



18.25 hrs



6 pcs



0.20 mm



0.40 mm



PET



218 g



Prusa
MK3/S/S+

[Hobby & Makers](#) > [Tools](#)

Tags: [handle](#) [battery](#) [carry](#) [18v](#) [ryobi18v](#) [18volt](#)

Easily carry two 18v batteries, with option for electrical connection(s)

Prevent rowdy batteries tumbling about in your tool bag!

Print Qty.1 of the “Ryobi 18v dual holder”

Then print Qty. 1 of “Ryobi 18v dual holder handle...”

When using...

“Ryobi 18v dual holder handle” (no electrical connections)

...then use Qty.4 of M4*8mm Cap head screw

When using...

“Ryobi 18v dual holder handle w-PowerPole” (for series 36-40v output)

“Ryobi 18v dual holder handle w-3 PowerPole” (for parallel 18-20v output)

...then use Qty.4 of M4*12mm Cap head screw and continue with the following...

Wire using a MINIMUM of 14 AWG wire

Insert Qty.4 of **Keystone 209. 1 Cell Leaf Spring Battery Contact, Spring Steel, Nickel Plating** (into the dual holder after soldering wires on, MINIMUM of 14 AWG suggested)

Pass wires through the hole between the dual holder and the handle plate, finally cut wires to length and crimp on the PowerPole pins.

Glue in Qty.4 battery clips to prevent spring leave contacts from getting pushed out.

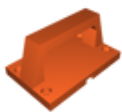
PETG suggested for strength and heat resistance. Pictured using **OVERTURE PETG Grass Green** which is very close to Ryobi green.

See my **other Ryobi 18v compatible adapters**.

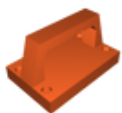
Don't have a 3D printer yet? That's OK, order already printed from...

<https://jpelectron.etsy.com>

Model files



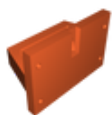
ryobi-18v-dual-holder-handle.3mf



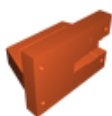
ryobi-18v-dual-holder-handle-w-powerpole.3mf



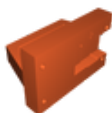
ryobi-18v-dual-holder-handle-w-3-powerpole.3mf



ryobi-18v-dual-holder-handle.stl



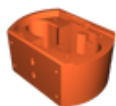
ryobi-18v-dual-holder-handle-w-powerpole.stl



ryobi-18v-dual-holder-handle-w-3-powerpole.stl



dual-18v-side-by-side-cap-for-single-batt-glue-in.stl



dual-18v-side-by-side.stl



dual-18v-side-by-side-terminal-glue-in.stl

Print files



ryobi-18v-dual-holder-handle_02mm_petg_mk3s_2h21m.gcode

PET 0.40 mm 0.20 mm 2.35 hrs 29 g Prusa MK3/S/S+



ryobi-18v-dual-holder-handle-w-powerpole_02mm_petg_... .gcode

PET 0.40 mm 0.20 mm 2.85 hrs 36 g Prusa MK3/S/S+



ryobi-18v-dual-holder-handle-w-3-powerpole_02mm_pet... .gcode

PET 0.40 mm 0.20 mm 3.06 hrs 39 g Prusa MK3/S/S+



dual-18v-side-by-side-cap-for-single-batt-glue-in_0... .gcode

PET 0.40 mm 0.20 mm 0.54 hrs 8 g Prusa MK3/S/S+



dual-18v-side-by-side-terminal-glue-in_02mm_petg_mk... .gcode

PET 0.40 mm 0.20 mm 0.18 hrs 1 g Prusa MK3/S/S+



dual-18v-side-by-side_02mm_petg_mk3s_9h16m.gcode

PET 0.40 mm 0.20 mm 9.27 hrs 105 g Prusa MK3/S/S+

License

This work is licensed under a
Creative Commons (4.0 International License)



Attribution-ShareAlike

- | Sharing without ATTRIBUTION
- | Remix Culture allowed
- | Commercial Use
- | Free Cultural Works
- | Meets Open Definition