



Whanganui City, Aotearoa, New Zealand - Fridge Magnet



Kiwibloke

[VIEW IN BROWSER](#)

updated 24. 12. 2022 | published 24. 12. 2022

Summary

A fridge magnet of Whanganui city, Aotearoa, New Zealand



4.87 hrs



1 pcs



0.10 mm



0.40 mm



PLA



26 g



Prusa
MK3/S/S+

[Household](#) > [Kitchen](#)

Tags: [magnet](#) [fridge](#) [topographic](#) [aotearoa](#)

Why

I wanted to get better at using topographic data sources and incorporating them into models.

Model Details

Data Source

The Whanganui topological data was sourced from <https://www.opentopography.org/> using the Shuttle Radar Topography Mission (STRM) Global dataset.

Tools Used

Paint.Net; Inkscape; QGIS Desktop, Fusion360, PrusaSlicer

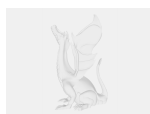
Method

Relief data was selected and exported from OpenTopography.org and imported into QGIS Desktop. A greyscale heightmap was generated and exported as a png. This png was tweaked in Paint.Net and then converted to a 3mf using <https://imagetostl.com/>

The raw topographic 3mf mesh was then combined with other artwork (converted to SVG using InkScape) to create the magnet shape which was exported as a final mesh (the 3mf files included with this model) into PrusaSlicer which was used to generate and tweak the final gcode (The gcode files included with this model).

The model includes a space for a 8mm diameter, 3mm thick neodymium magnet. Glue it in place with some cyanoacrylate glue.

Model files



whanganui.3mf

Print files



whanganui_01mm_pla_mk3s_4h52m-multi.gcode

🌀 PLA 🌀 0.40 mm ≡ 0.10 mm ⌚ 4.87 hrs ⚖️ 26 g 🖨️ Prusa MK3/S/S+
🗑️ colour change

License

This work is licensed under a
Creative Commons (4.0 International License)



Attribution-NonCommercial

- ✗ | Sharing without ATTRIBUTION
- ✓ | Remix Culture allowed
- ✗ | Commercial Use
- ✗ | Free Cultural Works
- ✗ | Meets Open Definition