



DIN Rail DM542 DM556 CNC stepper driver mount with M4 heat inserts



[VIEW IN BROWSER](#)

updated 24. 5. 2024 | published 24. 5. 2024

Summary

This allows you to mount your DM542 or DM556 stepper drivers on a DIN rail

[Hobby & Makers](#) > [Electronics](#)

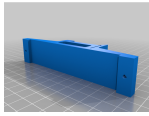
Tags: [cnc](#) [dinrail](#) [dinrailmount](#) [stepperdriver](#) [printnc](#)

You will need M4x6x5 heat inserts. If you would like to use something else or screw straight into plastic, there is also a .step provided.

M4x10 screws are a perfect match for attaching the stepper drivers but make sure the head isn't too large to fit.

This model has been updated in April 2024 to provide a better DIN rail fitment and also a much nicer look

This remix is based on



DIN RAIL DM542T STEPPER DRIVER

by grasi83

VoronDesign/
Voron-0

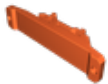


Voron-0/STLs/Electronics/PCB_DIN_Clip_x2.stl at
Voron0.2r1 · VoronDesign/Voron-0

Model files

din_rail_dm542t_stepperdriver_jm.step

din_rail_dm542t_stepperdriver_jm.stl



License ©

This work is licensed under a
[Creative Commons \(4.0 International License\)](#)



Attribution

-
- ✗ | Sharing without ATTRIBUTION
 - ✓ | Remix Culture allowed
 - ✓ | Commercial Use
 - ✓ | Free Cultural Works
 - ✓ | Meets Open Definition