



SUNLU Support For enclosure



3denvangelist

[VIEW IN BROWSER](#)

updated 24. 11. 2022 | published 24. 11. 2022

Summary

SUNLU Support For enclosure you can print with the resolution it works for you!

[3D Printers](#) > [3D Printers - Upgrades](#)

Tags: [sunlu](#) [blenderfile](#) [sunlufiladryers2](#)

I have added some Foam tape to secure the enclosure to the base, I hoped that the base model had less tolerance but with the tape works great!

This remix is based on



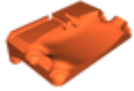
Sunlu S2 Tabletop Tray

by Djngnear

Model files



sunlu_base.blend



sunlu_base_-sunlu_s2.stl

[Find source .stl files on Thingiverse.com](#)

License ©

This work is licensed under a
[Creative Commons \(International License\)](#)



Public Domain

-
- ✓ | Sharing without ATTRIBUTION
 - ✓ | Remix Culture allowed
 - ✓ | Commercial Use
 - ✓ | Free Cultural Works
 - ✓ | Meets Open Definition