

Florbalak Rigid Interactive Dramatical Game Engine



Honza David

[VIEW IN BROWSER](#)

updated 24. 11. 2022 | published 24. 11. 2022

Summary

Also known as Fridge. It's more like an idea for children summer camps or LARPs than the actual model.

[Toys & Games](#) > [Other Toys & Games](#)

Tags: [upcycling](#) [fridge](#) [mk3s](#) [mk2s](#) [rambo](#) [larp](#) [florbalak](#) [makeoldprinterpartsgreatagain](#) [summercamp](#) [gamebook](#)

FRIDGE - A custom box fitted with the MK2's or MK3's internals and display assembly. The user can outfit it with custom peripherals such as sensors or moving parts and run custom code on the MK3's board. From this point on, the sky's the limit!

This thing comes from an idea that the control board on older printers is basically an arduino with some connectors and peripherals. You simply don't have to make your own PCBs, cables etc, everything is already ready. Of course I know this is a massive overkill for a simple box with an LCD and it could be made much cheaper, much better, much smaller, but if you have some old parts laying around and waiting for reuse, nothing is silly enough.

It was initially made for a summer camp I help organise every year, the

Florbalák, but it gradually found it's way to another events like some LARPs or even to a huge czech cyberpunk and postapocalyptic festival **Cybertown!**

Except printer parts, there is a place for three 18650 batteries and a RFID reader inside the Fridge - I use **this RC522 reader**. It's cheap and RFID tags are also very cheap. Tags usually comes with 10K or 1K memory - and that much must be just enough for everyone! No, seriously, I use it for some texts, for saving game progress, amount of money the player has and other useful stuff.

The outer box is 2l version of **IKEA 365+** (992.690.80). Ikea sells the lid separately.

Oh, and here are some videos!

<https://fb.watch/g-jDBawQ-d/>

<https://fb.watch/g-lckFfYaS/>

Some example code:

<https://github.com/HonzaDandy/fridge>

Disclaimer: The code is mostly made under the highest imaginable time pressure in the evening before the event, so please excuse it for it's stupidity and me for breaking every imaginable programming rules, but it's arduino, right?

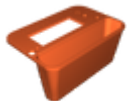
Model files



fridge_button.stl



fridge_el_holder.stl



fridge_cover.stl



fridge_batt_holder.stl

License

This work is licensed under a
Creative Commons (4.0 International License)



Attribution—Noncommercial—Share Alike

- ✗ | Sharing without ATTRIBUTION
- ✓ | Remix Culture allowed
- ✗ | Commercial Use
- ✗ | Free Cultural Works
- ✗ | Meets Open Definition