



Low profile quick-swap Spool roller holder; Also for wide rolls of filament 2.5kg



FipstheDog

[VIEW IN BROWSER](#)

updated 25. 11. 2022 | published 25. 11. 2022

Summary

Filament can be quick-changed. Wide roller for large rolls. Bearings snap in place. Quick assembly and disassembly.

[3D Printers](#) > [Accessories](#)

Tags: [spoolholder](#) [filamentspoolholder](#) [filamentspool](#) [bearings](#) [improvement](#) [lowprofile](#) [swappable](#) [quickchange](#) [3dprinteraccessory](#) [606](#) [simpleprint](#) [3dprinteraccessories](#)

I was annoyed of my current spool holder, as I had to adjust it to fit filament rolls of different widths. With this design I can just put a roll on it and swap them easily.

The design requires:

- 4 M6 Screws
- 4 606ZZ bearings

The bearings snap in place and do not come loose when lifted. You might want to add a washer between the plastic cylinder and the bearing.

The 70mm cylinder is for normal 1kg rolls and the 110mm for 2.5kg.

Printing the cylinder: I print it standing and use a 5mm brim to add some grip to adhere to the printing bed.

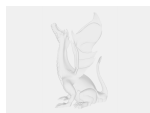
Let me know if you want to use a different bearing or need another width.

I am not sure how well the internal threats work on other printers. I printed mine with a 0.4mm layer height and a 0.6mm nozzle. They were ok. Feedback on the design is very welcome! :)

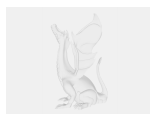
Model files



mount.3mf



m6-cylinder-screwed-70mm.3mf



m6-cylinder-screwed-110mm.3mf

License ©

This work is licensed under a
[Creative Commons \(4.0 International License\)](#)



Attribution—Noncommercial—Share Alike

-
- ✗ | Sharing without ATTRIBUTION
 - ✓ | Remix Culture allowed
 - ✗ | Commercial Use
 - ✗ | Free Cultural Works
 - ✗ | Meets Open Definition

