



Guitar Amplifier Organizer (vase mode!)



kth0

[VIEW IN BROWSER](#)

updated 2. 12. 2022 | published 2. 12. 2022

Summary

Utilize vase mode, fuzzy skin, and filament swapping to make a great looking bit of functional desk art.



N/A



2 pcs



0.28 mm



0.40 mm



PLA



N/A



Creality
Ender 3 V2

[Household](#) > [Office](#)

Tags: [organizer](#) [office](#) [guitar](#) [speaker](#) [organization](#)
[deskorganizer](#) [marshall](#) [amp](#)

This is fun little pen holder in the shape of a guitar amp half stack. Pay attention to the settings below, and you should be able to print this very quickly and have a great result.

I've also included a "blank" bottom template if you want to add your own name.

Print Instructions:

Black-Cabinet_Vase

Use vase mode! yaaay for quick prints. Enable the “fuzzy skin” settings in your slicer to get a pretty authentic looking tolex finish on the amp. Quick tip for Cura 5 users- there's a bug that doesn't allow you to use both fuzzy and vase mode at the same time. Try Cura 4 if you run into that issue.

Gold-Controls

Print normally, with the knobs facing the sky. Use supports

Black-Handle

Print two of these normally, no supports needed.

Multi-Bottom & Multi-Top

(front meshes & white border on the amp)

- These can be printed together.
- Disable top & bottom layers.
- Use a grid infill of 80%
- Wall line Count of 2
- Set your slicer to pause & request a filament change around layer 4 when the borders and logo start to print.
- Load black filament first, and then swap to white when needed.

Aren't equipped to change filament at a specific layer height? I've included a folder where you can print those items on their own, but it will be trickier to assemble.

Once it's all printed, superglue the bits together and enjoy!

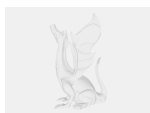
Post a make! I'd love to see them!

Model files

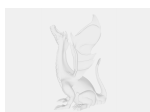


Only use if you don't have color change at layer height

5 files



white-bottom-piping.3mf



white-top-piping.3mf



black-bottom-screen.3mf



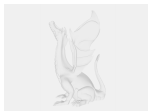
black-top-screen.3mf



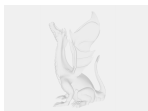
white-emblem.3mf



multi-bottom__blank.3mf



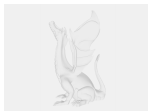
black-cabinet__vase.3mf



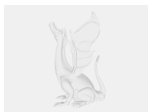
gold-controls__use-supports.3mf



black-handle-2x.3mf



multi-bottom.3mf



multi-top.3mf

Print files



fuzzyvaseamp.gcode

🌀 PLA 🌀 0.40 mm ≡ 0.28 mm ⌚ 1.50 hrs ⚖️ 13 g



grill.gcode

🌀 PLA 🌀 0.40 mm 🌀 0.28 mm 🕒 0.15 hrs 📊 3 g

📄 Includes a filament change! Start with black, then white.

License ©



This work is licensed under a
[Creative Commons \(4.0 International License\)](#)

Attribution-NonCommercial

-
- ✗ | Sharing without ATTRIBUTION
 - ✓ | Remix Culture allowed
 - ✗ | Commercial Use
 - ✗ | Free Cultural Works
 - ✗ | Meets Open Definition