

APC-0-V7 Armoured Personnel Carrier - Open Body



RobertusMaximus

[VIEW IN BROWSER](#)

updated 23. 3. 2023 | published 23. 3. 2023

Summary

Sometimes you gotta let the men breathe...



31.69 hrs



2 pcs



0.20 mm



0.40 mm



PLA



392 g



Prusa
MK3/S/S+

[Tabletop Miniatures](#) > [Vehicles & Machines](#)

Tags: [spacex](#) [terrain](#) [space](#) [vehicles](#) [crate](#) [cargo](#)
[cargoship](#) [warhammer](#) [40k](#) [spacer](#) [starship](#) [tank](#)
[garage](#) [construction](#) [pallet](#) [spaceship](#) [28mm](#) [beercrate](#)
[diorama](#) [train](#) [sciencefiction](#) [modeltrain](#) [40kwarhammer](#)
[warhammer40k](#) [warhammer40000](#) [warhammerfantasy](#)
[vehicle](#) [ammocrate](#) [scatterterrain](#) [deepspacecargo](#)
[miniature28mm](#) [tabletopterrain](#) [warehouse](#) [wargame](#)
[wargameterrain](#) [wargames](#) [wargamingterrain](#) [wargamemodel](#)
[tanks](#) [modeltrains](#) [40kterrainscenery](#) [warhammer40kterrain](#)

wh40k spacecraft 28mmminiature 28mmminiatures
pallets 28mmminiaturebase 28mmminiaturebases crates
wargamesterrain dioramas warhammer30k 40kastramilitarum
tanktracks 28mmfantasy constructionsite scify
hardsciencefiction starships 40kterrain dndterrain
28mmterrain 28mmscale wargamesterrian 28mmbase
armouredvehicle cargocontainer warhammerbase palletizing
wargameminiature armycrate galindo galindos spaceport
garageshop

In the darkness of the far distant future, the mutant, alien, and worse plunder the megalopolis cities. Some looking for forgotten technology and precious metals, and others for the sweet taste of Hum'ahn flesh.

Despite the endless warfare, desperate gang wars, and iron-handed overlords, the peace must still be kept!

Thus enters the marines, carried in the opened-body armoured APC-O V7 of death-dealing steel. Once these units enter the fray, only the bodies of the broken dead remain. In the dark, dangerous world of the megalopolises, death lurks around every dark corner and bend.

Use those guns!

Deny the alien, mutant, heretic, and worse!

Get back in the fight!

Designed on Tinkercad.

There are three sections to assemble on the APC-O-V7.

- Clean your build surface with dishwashing soap! Avoid lifting and warped prints!
- **Support enforcers** are required for the hull and gun.
- Use “**Adaptive Cubic**” on **Print Setting/Infill**. It cuts off more than an hour of printing time! (it is already in the settings in the .3mf files)
- Assembly:
 - Print all three parts (hull and two treads)
 - Superglue the treads to the hull.
- It will scale easily if you want a larger or smaller version.

More Armour!

- Demolior Class Heavy Tank - <https://www.printables.com/model/135967-tank-demolior-class-heavy-deathhead-ii-model-scien>
- Scopulus Class Heavy Tank - <https://www.printables.com/model/219518-scopulus-heavy-tank>
- Mobile Artillery Vehicle - <https://www.printables.com/model/218512-mobile-artillery-vehicle>
- Combat Carrier Prototype 99A - <https://www.printables.com/model/244544-combat-carrier-prototype-99a>
- Marine Combat Tank - <https://www.printables.com/model/285621-marine-combat-tank>
- Marine Land Tank- <https://www.printables.com/model/297478-marine-land-tank-v6>
- **APC V7 Armoured Personnel Carrier** - <https://www.printables.com/model/313414-apc-v7-armoured-personnel-carrier>
- **APC-0-V7 Armoured Personnel Carrier - Open Body** - <https://www.printables.com/model/324220-apc-0-v7-armoured-personnel-carrier-open-body>

Enjoy!

~~~~~

## More fun stuff:

### Construction:

Building under construction Part 1 - <https://www.printables.com/model/174643-building-under-construction>

Building under construction Part 2 - <https://www.printables.com/model/176588-building-under-construction-elevator-shaft-part-2>

Building under construction Cargo Part 3 - <https://www.printables.com/model/177068-building-under-construction-cargo-part-3>

Steel Beams - <https://www.printables.com/model/168925-steel-beams>

Electrical Grid Series Switch Yard - <https://www.printables.com/model/165696-electrical-grid-series-switch-yard>

Electrical Grid Series Power Station - <https://www.printables.com/model/164631-electrical-grid-series-power-station>

Electrical Grid Series Substation - <https://www.printables.com/model/164623-electrical-grid-series-sub-station>

Building Stand Alone - <https://www.printables.com/model/151994-wargame-building-terrain-stand-alone-building-grou>

Building Stackable - <https://www.printables.com/model/151627-wargame-building-terrain-stackable-group-one>

Building - Wargame SkyScraper - <https://www.printables.com/model/151632-wargame-skyscraper-building>

Above Ground Pipeline - <https://www.printables.com/model/150322-above-ground-pipelines>

Above Ground Pipeline Addons - <https://www.printables.com/model/222945-pipeline-addons>

Space Port Fuel Station- <https://www.printables.com/model/222920-space-port-fuel-station>

Pipeline Terrain - <https://www.printables.com/model/148810-pipeline-terrain>

Portable Refinery - <https://www.printables.com/model/136716-portable-refinery-v1>

Fuel Processor - <https://www.printables.com/model/193375-fuel-processor>

Dual Fuel Processor - <https://www.printables.com/model/194108-dual-fuel-processor-remix>

Quad Fuel Processor - <https://www.printables.com/model/194113-quad-fuel-processor-remix>

Single Fuel Tank - <https://www.printables.com/model/196216-single-fuel-tank-remix>

Dual Fuel Tank - <https://www.printables.com/model/196144-dual-fuel-tanks-remix>

### **Greebles:**

Greebles - <https://www.printables.com/model/153793-greebles-entry-panel-hatches-and-more>

Greebles Part 2 - <https://www.printables.com/model/154380-greebles-part-2-lights-power-units-vents-ladder-co>

Greebles Part 3 - <https://www.printables.com/model/156382-greebles-part-3-doors-doors-doors>

Greebles Part 4 Large Door and Ramp - <https://www.printables.com/model/179127-greebles-part-4-large-door-and-ramps>

Atmosphere Processor - <https://www.printables.com/model/181232-atmosphere-processor>

### **Vehicles:**

Freight Ten - <https://www.printables.com/model/134117-freight-ten-cargo-transport-model-science-fiction>

Super Freight Ten - <https://www.printables.com/model/137884-super-freight-ten-model-science-fiction>

Freight Ten Single Cab - <https://www.printables.com/model/140687-freight-ten-transport-single-cab-model-science-fic>

Freight Ten Command Version - <https://www.printables.com/model/134140-freight-ten-command-version-model-science-fiction>

Freight Ten Recovery Vehicle - <https://www.printables.com/model/175208-freight-ten-recovery-vehicle>

Freight Ten BullNose - <https://www.printables.com/model/143750-freight-ten-bullnose-model-science-fiction>

Freight Ten BullNose Recovery Vehicle - <https://www.printables.com/model/175215-freight-ten-bullnose-recovery-vehicle>

Mongruxx Attack Vessel - <https://www.printables.com/model/148105-mongruxx-attack-vessel>

Mongruxx Attack Recovery Vessel - <https://www.printables.com/model/170446-mongruxx-attack-recovery-vessel>

Surus Transport - <https://www.printables.com/model/148769-surus-transport>

Demolior Class Heavy Tank "DeathHead" - <https://www.printables.com/model/135967-tank-demolior-class-heavy-deathhead-ii-model-scien>

Scopulus Class Heavy Tank - <https://www.printables.com/model/219518-scopulus-heavy-tank>

Mounted Guns - <https://www.printables.com/model/199450-mounted-guns>

Mobile Artillery - <https://www.printables.com/model/218512-mobile-artillery-vehicle>

Stolen and Looted APC - <https://www.printables.com/model/218549-stolen-and-looted-apc-from-the-white-desert>

Combat Carrier Prototype 99A - <https://www.printables.com/model/244544-combat-carrier-prototype-99a>

Marine Combat Tank - <https://www.printables.com/model/285621-marine-combat-tank>

Marine Land Tank- <https://www.printables.com/model/297478-marine-land-tank-v6>

APC V7 Armoured Personnel Carrier - <https://www.printables.com/model/313414-apc-v7-armoured-personnel-carrier>

### **Train:**

Train Engine and Cargo cars at - <https://www.prusaprinters.org/prints/122649-sci-fi-train-elevated-monorail-part-1>

Prison Wagon / Car - <https://www.prusaprinters.org/prints/122951-sci-fy-train-prison-wagoncar-part-3>

Gunwagon - <https://www.prusaprinters.org/prints/122979-sci-fy-train-gunwagoncar-part-4>

People Transport - <https://www.prusaprinters.org/prints/128181-sci-fy-train-people-transport>

Elevate Track at - <https://www.prusaprinters.org/prints/122656-sci-fy-train-elevated-monorail-tracks-part-2>

Track Platform - <https://www.prusaprinters.org/prints/128184-sci-fy-train-station-platform-version-1>

### **Cargo:**

Cargo Load - <https://www.printables.com/model/148388-vehicle-cargo-load>

Armoured Shelter - <https://www.prusaprinters.org/prints/121033-armoured-shelter-terrain-two-models>

Fuel Tank - <https://www.prusaprinters.org/prints/137076-fuel-tank-model-science-fiction>

Barrels and Barrels with Gear logo - <https://www.prusaprinters.org/prints/136754-barrels-and-barrels-with-gear-logo>

Barrel on a diamond plate pallet - <https://www.printables.com/model/181215-barrel-on-a-diamond-plate-pallet>

Portable refinery - <https://www.prusaprinters.org/prints/136716-portable-refinery-v1>

Energy Unit - <https://www.prusaprinters.org/prints/121596-energy-unit-terrain-piece>

SCI FY Generator - <https://www.prusaprinters.org/prints/120704-sci-fy-generator>

Diesel Generator - <https://www.prusaprinters.org/prints/120654-diesel-generator-terrain-two-models>

SCI FY Cargo Containers - <https://www.prusaprinters.org/prints/100110-sci-fy-cargo-containers>

Machine Crates - <https://www.prusaprinters.org/prints/96439-machine-cargo-crate>

Wooden Crates and Lumber - <https://www.printables.com/model/181221-wooden-crates-and-lumber>

### **Space Port:**

Space Port - <https://www.printables.com/model/205432-space-port-terrain>

Space Port Living Quarters - <https://www.printables.com/model/229847-space-port-terrain-living-quarters>

Space Port Center Bridge Module - <https://www.printables.com/model/230666-space-port-center-bridge-module>

Space Port Power Station Module - <https://www.printables.com/model/231294-space-port-power-station-module>

Space Port Power Station Burn Unit Module - <https://www.printables.com/model/247807-space-port-power-station-burn-unit-module>

Space Port Exploded Power Station Module - <https://www.printables.com/model/231300-space-port-exploded-power-station>

Space Port Platform Lift Module - <https://www.printables.com/model/231303-space-port-platform-lift-module>

Space Port Platform Walkway - <https://www.printables.com/model/231306-space-port-platform-walkway>

Space Port Gun Nest Module - <https://www.printables.com/model/247880-space-port-gun-nest-module>

Space Port Gun Nest Module Roof Addon - <https://www.printables.com/model/247929-space-port-gun-nest-roof-addon>

Space Port Gun Ramp - <https://www.printables.com/model/247939-space-port-gun-ramp>

Space Port Central HQ - <https://www.printables.com/model/255585-space-port-central-hq>

Space Port Armory - <https://www.printables.com/model/255609-space-port-armory>

Space Port Gun Deck - Stand Alone - <https://www.printables.com/model/255639-space-port-gun-deck-stand-alone>

Wrecked Bridge Space Port - <https://www.printables.com/model/234074-wrecked-bridge-space-port>

Starship Cargo Pod - <https://www.printables.com/model/224797-starship-cargo-pod>

Damaged Starship Cargo Pod - <https://www.printables.com/model/229884-damaged-starship-cargo-pod>

Starship Transfer Tug - <https://www.printables.com/model/227490-starship-transfer-tug>

Cargo Pod Mule - <https://www.printables.com/model/227527-cargo-pod-mule>

Bio Pod Personnel Vehicle - <https://www.printables.com/model/227548-bio-pod-personnel-vehicle>

Space Port Fuel Station - <https://www.printables.com/model/222920-space-port-fuel-station>

### **Science Fiction AI Robots:**

Machina - <https://www.prusaprinters.org/prints/132133-machina-robot-model-v3>

Galindos - <https://www.prusaprinters.org/prints/143724-galindos-robot-model-science-fiction>

Galindos Evolved - <https://www.printables.com/model/230369-galindos-evolved>

Galindos Heavy Warriors - <https://www.printables.com/model/231795-galindos-heavy-warriors>



Galindos MK4 - <https://www.printables.com/model/240226-galindos-mk4>

Galindos Space Lurk - <https://www.printables.com/model/232987-galindos-space-lurk>

## **Terrain:**

SCI FY Tower - <https://www.prusaprinters.org/prints/121103-sci-fy-tower-terrain>

Armoured Deck - <https://www.prusaprinters.org/prints/120973-sci-fy-armoured-deck-20cm-x-20cm-or-8-inch-x-8-inc>

## **Music**

Analog Synth Stand Large, Medium, and Small - <https://www.printables.com/model/260137-analog-synth-stand-large-medium-and-small>

Synthesizer Stand for Make Noise and East Beast / West Pest - <https://www.printables.com/model/275604-synthesizer-stand-for-make-noise-and-east-beast-we>

Synthesizer Stand for LYRA-8 Organismic Synthesizer - <https://www.printables.com/model/275614-synthesizer-stand-for-lyra-8-organismic-synthesize>

Patch Cable Holder - <https://www.printables.com/model/275649-patch-cable-holder-for-your-synthesizer>

Cable Hooks - <https://www.printables.com/model/265254-music-cable-hooks>

Headphone Hanger - <https://www.printables.com/model/313001-headphone-hanger>

~~~~~

My name is Robert Day, and when I am not working as a computer security engineer, I write science fiction novels, build electronics, 3d print like a madman (love Prusa printers), Linux and open source freak, cigar, and tequila lover, armchair philosopher, enjoy a sweet life with my beloved wife Many, and live in Missouri City, Texas.

To check out my novels:

Authors page at Amazon: https://www.amazon.com/Robert-Day/e/B07CKMTKJ1%3Fref=dbs_a_mng_rwt_scns_share

My books (all science fiction)

Transport Unfriendly Skies

One Way to Hell, EB the Rabbantine

Mongruxx Wolfpac

Mongruxx Starship Umbra

Mongruxx Where the River Ends

Mongruxx Until We Cross This Bridge Again

Later this year: "Gunship Quistavera, The edge of nowhere"

My blog, The White Desert <https://whitedesert.org>

Philosophy blog: <https://godsobservations.wordpress.com>

See you on the other side, Pilgrim.

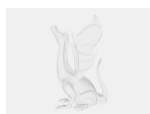
This remix is based on



APC V7 Armoured Personnel Carrier

by RobertusMaximus

Model files



apc-o-v7-hull.3mf

☐ Hull

apc-o-v7-tracks.3mf

☐ Treads

Print files



apc-o-v7-hull_02mm_pla_mk3s_15h5m.gcode

⚙️ PLA ⚙️ 0.40 mm ⚙️ 0.20 mm ⌚ 15.08 hrs ⚖️ 202 g 🖨️ Prusa MK3/S/S+

📄 Open Hull



apc-o-v7-tracks_02mm_pla_mk3s_16h37m.gcode

⚙️ PLA ⚙️ 0.40 mm ⚙️ 0.20 mm ⌚ 16.61 hrs ⚖️ 190 g 🖨️ Prusa MK3/S/S+

📄 Treads

License ©

This work is licensed under a
[Creative Commons \(4.0 International License\)](#)



Attribution

- ✖ | Sharing without ATTRIBUTION
- ✓ | Remix Culture allowed
- ✓ | Commercial Use
- ✓ | Free Cultural Works
- ✓ | Meets Open Definition